



# CITY OF RICE PARKS & TRAILS MASTER PLAN

## RICE, MN PARKS & TRAILS MASTER PLAN

*Submitted to  
City of Rice City Council*



## ACKNOWLEDGMENTS

### WITH THANKS TO:

**Public participants** who provided feedback to help define the final recommendations for this document and the following stakeholders:

#### CITY OF RICE PARKS AND TRAILS MASTER PLAN STEERING COMMITTEE

Craig Gondeck  
 Sam Hageman  
 Ken Nodo  
 Greg Bruestle  
 Jerry Sauer  
 Chris Byrd  
 Mark Hauck  
 Kelly Desormey  
 Ross Hamann  
 Brian Skroch  
 Stephanie Roggenbuck  
 Ed Popp  
 Christina Bemboom  
 Mindy Fast

#### CITY STAFF

Ross Hamann - Police Chief  
 Stephanie Roggenbuck - City Clerk

#### CITY COUNCIL

Dale Rogholt - Mayor  
 Paula Kampa - City Council  
 Brian Skroch - City Council  
 Bryan Anderson - City Council  
 Chris Scheel - City Council  
 Sheri Johnson - Treasurer

#### PARKS BOARD

Brian Skroch  
 Jerry Sauer  
 Kelly Desormey  
 Ken Nodo

#### Prepared for:

##### City of Rice

City Hall  
 205 Main Street E  
 PO Box 179  
 Rice, MN 56367

#### Prepared by:

##### Bolton & Menk Inc.

7656 Design Road  
 Suite 200  
 Baxter, MN 56425

Approved by City Council Date: \_\_\_\_\_

**TABLE OF CONTENTS**

- i. Acknowledgments.....2
- ii. Executive Summary.....5
- 1. Introduction.....6  
General Information, Responsible Organizations,  
Regional Context
- 2. Park System Information.....9  
Existing Parks and Trails Facilities, Proposed  
Park System Improvements, Existing Facilities  
Valuations
- 3. Trends/Public Values.....21  
Public Input, Demographics, Recreational Trends  
and Public Values, Park Facilities Comparison
- 4. Master Plan Recommendations.....25  
Regional System Recommendations, City-Wide  
System Recommendations, Downtown System  
Recommendations
- 6. Implementation & Operational Costs.....41  
Proposed Improvement Cost Estimates,  
Proposed Operations & Maintenance Cost  
Estimates
- 7. Funding.....43  
Legacy Funding, Other Funding Sources
- 8. Appendix A.....45  
Public Participation Survey, Meeting Minutes &  
Materials

*this page intentionally left blank*

## EXECUTIVE SUMMARY

### INTRODUCTION

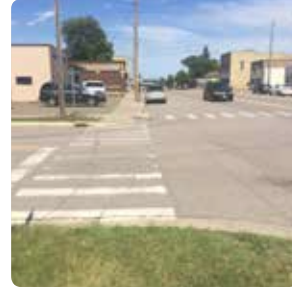
Parks and trails provide communities with many benefits. The purpose of this Master Plan is to guide the City of Rice in maintaining its existing parks and trail system, and also planning for future facilities. The focus of this report is mainly on establishing a baseline for existing facilities and providing Rice with a list of recommendations to use in future parks and trails development.

### DATA COLLECTION

Part of the master planning process included inventorying the City of Rice's existing park and trail facilities. This inventory included an on-site evaluation of existing park amenities and acreages to provide a baseline to determine future recommendations. Identification of existing challenges were discussed during this inventory phase and were used to focus on select aspects of the parks and open spaces during the subsequent analysis phase. Additional data was collected for various other communities of similar size to Rice to use as a baseline in determining the overall strengths, weaknesses and needs of their parks and trails systems.

### PUBLIC INVOLVEMENT

A diverse parks and trails master plan steering committee was created at the beginning of the master planning process. Three steering committee meetings and two public open houses were held throughout the process in order to provide opportunities for the public to weigh in on the plan during its development. Additionally, prior to the creation of the steering committee and master planning process, a great deal of public input on the park and trail system was gathered in the 2016 Rice Park Board Survey. The 2011-2012 Rice Comprehensive Plan update also included a community survey report. This Parks and Trails Master Plan document should be reviewed and updated on a regular basis to ensure the desires of the community continue to be addressed.



## 1. INTRODUCTION

The purpose of this Master Plan is to evaluate issues and needs within the City of Rice's existing park and trail facilities and to identify and prioritize future park and trail improvements that will reflect the needs and values of all potential users. This document is intended to act as a guide for the City of Rice in the planning and implementation of park improvements.

### GENERAL INFORMATION

Rice is a community of approximately 1,361 people located in northwest Benton County, Minnesota. The Mississippi River runs directly west of the city and U.S. Highway 10 runs through the eastern edge of town. The community covers approximately 6.1 square miles. The BNSF railroad runs through the west side of downtown parallel to Highway 10. Rice is part of the Sauk Rapids – Rice Schools system and the only school located within the City of Rice is the Rice Elementary School located in the northern portion of downtown.

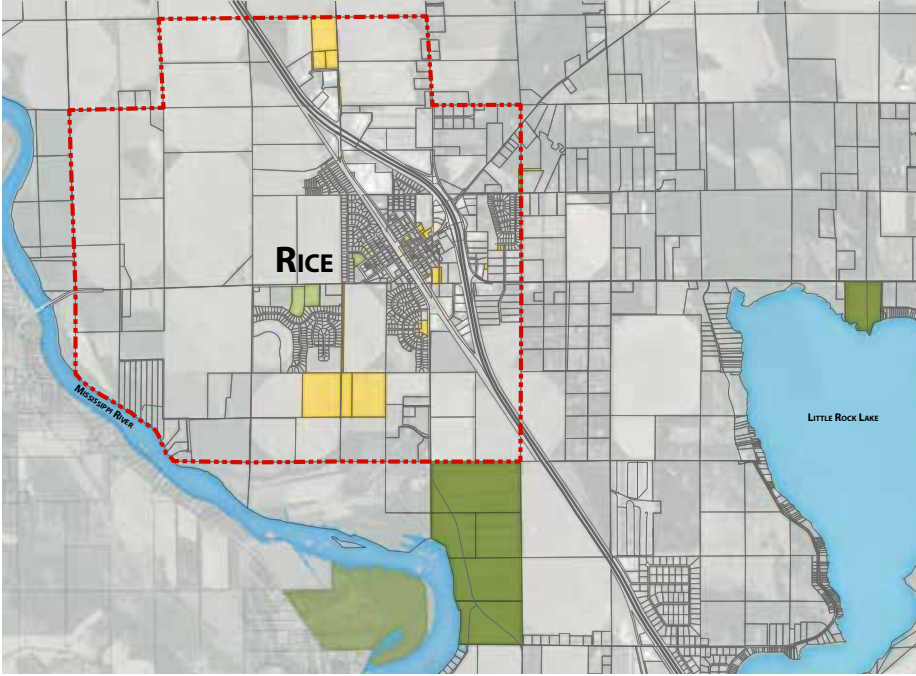
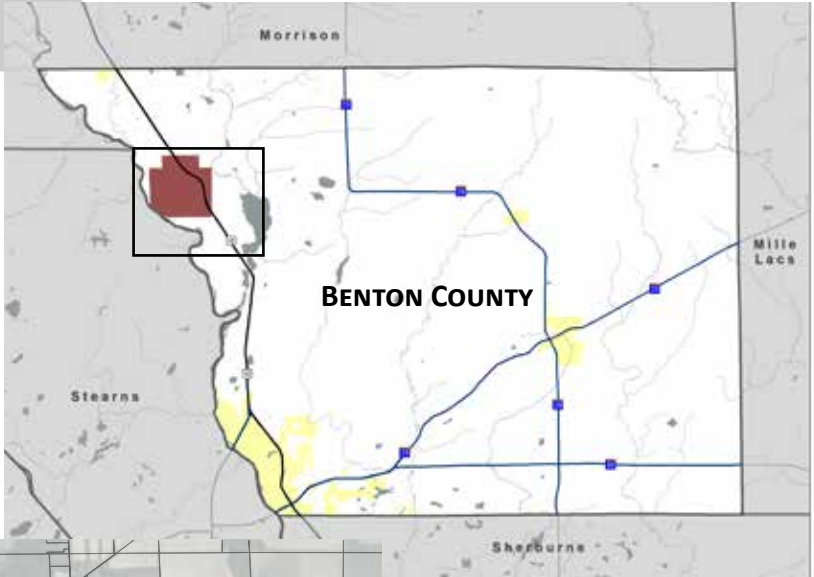
Rice has three community parks covering over 17 acres. There are four county owned parks in the area covering over 549 acres. The Mississippi River Trail route follows County Road 55 north into town and then west on 125th St (CSAH 2) to reconnect with the Mississippi River.

### RESPONSIBLE ORGANIZATIONS

Within the City limits of Rice, the majority of parkland is owned and operated by the City of Rice Public Works Department. One of the major recreational destinations in town, Rice Elementary School, is owned and operated by the school district, though its facilities are open & accessible to the general public. Much of the sidewalk system within the downtown core and surrounding subdivisions is constructed and maintained within city owned right-of-way, but there are locations where coordination will need to occur with other entities including private land owners. In these cases, easements may be needed. One of the critical areas where coordination will need to occur is at the BNSF Railroad crossing on Main Street. The drainage pond on the east side of Highway 10, constructed with the new bridge, is owned and maintained by MnDOT, so the city should coordinate any improvements adjacent to this area with MnDOT. Lastly, any connections sought along County designated roadways, should be coordinated with Benton County.

### REGIONAL CONTEXT

**Figure 1** illustrates the City of Rice in a regional context. Located directly on the eastern shores of the Mississippi River in the northwest corner of Benton County, and just fifteen minutes north of St. Cloud, the city offers the charm of a small rural community, while in close proximity to big city amenities. Highway 10 runs through the City of Rice and the new on/off ramps provide convenient access for regional travelers and easy access to larger population centers including St. Cloud (16 miles), Little Falls (19 miles) and Minneapolis/St. Paul (80 miles). Segments of the larger Mississippi River Trail (MRT, U.S. Bicycle Route 45) run through the City of Rice and the river itself hosts the Mississippi River Water Trail, which is a draw for canoers/kayakers, and fisherman. There are several boat launches in the area which can cater to these users.



**FIGURE 1 - CONTEXT MAP**

### FACILITIES LOCATION MAP

#### LEGEND

##### CITY OF RICE PARKS

- 1. BASEBALL FIELDS PARK
- 2. WESTSIDE PARK
- 3. LIONS PARK
- 4. FUTURE CITY PARK
- 5. NEIGHBORHOOD PARK 1 (PROPOSED)
- 6. NEIGHBORHOOD PARK 2 (PROPOSED)

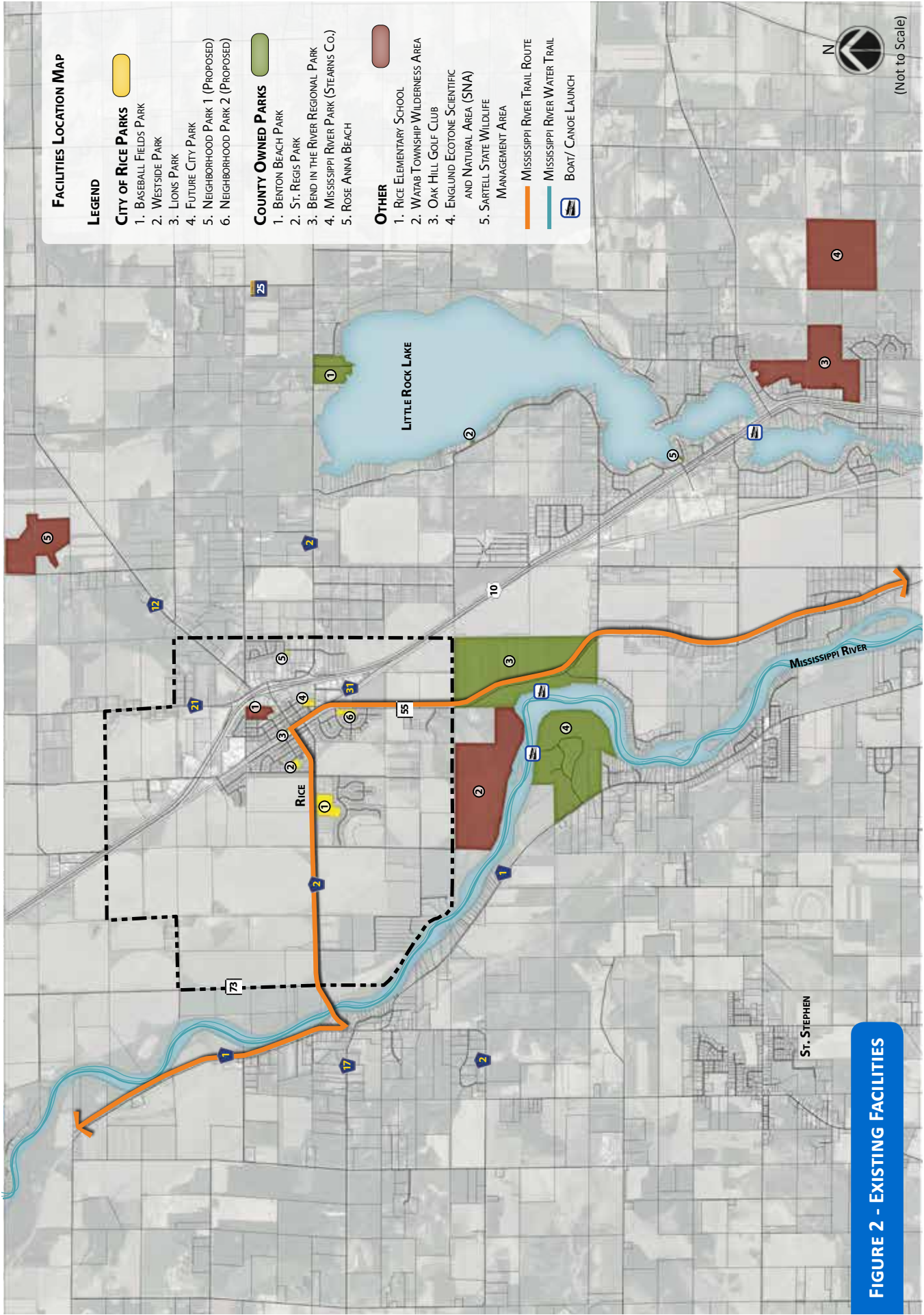
##### COUNTY OWNED PARKS

- 1. BENTON BEACH PARK
- 2. ST. REGIS PARK
- 3. BEND IN THE RIVER REGIONAL PARK
- 4. MISSISSIPPI RIVER PARK (STEARNS CO.)
- 5. ROSE ANNA BEACH

##### OTHER

- 1. RICE ELEMENTARY SCHOOL
- 2. WATAB TOWNSHIP WILDERNESS AREA
- 3. OAK HILL GOLF CLUB
- 4. ENGLUND ECOTONE SCIENTIFIC AND NATURAL AREA (SNA)
- 5. SARTELL STATE WILDLIFE MANAGEMENT AREA

- MISSISSIPPI RIVER TRAIL ROUTE
- MISSISSIPPI RIVER WATER TRAIL
- BOAT / CANOE LAUNCH



(Not to Scale)

**FIGURE 2 - EXISTING FACILITIES**



## 2. PARK SYSTEM INFORMATION



### EXISTING PARKS AND TRAILS FACILITIES

Figure 2 on Page 8 identifies parks and trails facilities within the City of Rice and the surrounding region that were identified as being used by residents and visitors of the City. These facilities include those owned by the City of Rice, Benton County, Stearns County, as well as several privately owned and operated facilities. To better understand available amenities at these facilities, the **Rice Park Facility Inventory** on Page 10 provides a park-by-park analysis that includes size, classification (City-owned, County-Owned, or Privately Owned), and available amenities. An enlarged view of the individual City and County owned facilities included in this analysis is also available on Pages 11-17.

### PROPOSED PARK SYSTEM IMPROVEMENTS

Input from the Rice Parks and Trails Master Plan Steering Committee and the general public (through survey responses and open houses) were used to identify potential park and trail improvements within the City of Rice and the surrounding area. Information on proposed facility/amenity improvements identified throughout the process will be discussed in more detail in Section 4 (Master Plan Recommendations).





**EXISTING SITE FACILITIES AT WESTSIDE PARK**

The following list identifies the existing facilities and amenities available to users of Westside Park. Refer to the **Figure above** for locations.

- 1. Closed shelter house with kitchen (seats 75, ADA accessibility)    Acres: 2.25
- 2. Picnic tables (various locations) and open air shelter
- 3. 2 play sets
- 4. 1 swing set
- 5. Hockey and skating rink
- 6. Rink lighting



### EXISTING SITE FACILITIES AT RICE BASEBALL FIELDS

The following list identifies the existing facilities and amenities available to users of Rice Baseball fields. Refer to the **figure above** for locations.

1. 2 softball diamonds
2. 1 play set
3. 2 open-air shelters
4. Parking (aggregate)
5. Benches
6. Field lighting
7. Open field to the west

Acres: 14.7



**EXISTING SITE FACILITIES AT LIONS PARK**

The following list identifies the existing facilities and amenities available to users of Lions Park. Refer to the **figure above** for locations.

- 1. Picnic Facilities
- 2. Farmers Market

Acres: 0.4



### EXISTING SITE FACILITIES AT RICE ELEMENTARY SCHOOL

The following list identifies the existing facilities and amenities available to users of Rice Elementary School. Refer to the **figure above** for locations.

- |   |             |
|---|-------------|
| 1. 2 softball diamonds                      | Acres: 10.9 |
| 2. Playground equipment (various locations) |             |
| 3. 1 swing set                              |             |
| 4. Parking                                  |             |



### EXISTING SITE FACILITIES AT BENTON BEACH PARK (BENTON COUNTY)

The following list identifies the existing facilities and amenities available to users of Benton Beach Park. Refer to the **Figure above** for locations.

- |   |                              |
|---|------------------------------|
| 1. Little Rock Lake Yacht Club                    | 8. Horseshoes                |
| 2. Campground (44 sites) with electric plug-in    | 9. Softball field            |
| 3. Showers and dump station                       | 10. Basketball court         |
| 4. 18 hole disc golf course                       | 11. Boat landing and parking |
| 5. Sand volley ball                               |                              |
| 6. Picnic areas with shelters (various locations) |                              |
| 7. Fire rings (various locations)                 |                              |

Acres: 30 +/-



### EXISTING SITE FACILITIES AT BEND IN THE RIVER REGIONAL PARK (BENTON COUNTY)

The following list identifies the existing facilities and amenities available to users of Bend in the River Regional Park. Refer to the **Figure above** for locations.

1. Historic farmhouse
2. Hike/ ski paths (aggregate)
3. Observation areas (various locations)
4. Parking (aggregate)
5. Canoe landing
6. Shade Trees
7. Primitive restrooms (two locations)
8. Picnic areas with either grills or fire rings (various locations)

Acres: 289





**EXISTING SITE FACILITIES AT MISSISSIPPI RIVER PARK (STEARNS COUNTY)**

The following list identifies the existing facilities and amenities available to users of Mississippi River Park. Refer to the **figure above** for locations.

- 1. (6mi) Trail
- 2. Disc Golf Course
- 3. Boat Landing
- 4. Benches
- 5. Grills (various locations)
- 6. Play set and play area
- 7. Picnic Tables
- 8. Picnic Shelter
- 9. Archery Range
- 10. Cross Country Ski Trails
- 11. Canoe/Bicycle Campground

Acres: 230

## EXISTING FACILITIES VALUATIONS

The following section provides a breakdown of the three existing parks (Westside Park, Rice Ballfields Park, and Lions Park) making up the Rice park system to determine an overall valuation of the system. Each park valuation identifies amenities available at the park, and an estimated value associated with those amenities. These values are estimated based on the age of the amenity and approximate costs of the amenities in 2017. Estimates are as follows:

Westside Park			Existing Facilities
Qty	Description	Unit Price	Total Price
	Land (~5 acres)	\$15,000.00	\$75,000.00
1	Community Building	\$150,000.00	\$150,000.00
1	Maintenance Shed	\$10,000.00	\$10,000.00
1	Parking Lot	\$50,000.00	\$50,000.00
8	Picnic Table	\$500.00	\$4,000.00
1	Walking Path	\$30,000.00	\$30,000.00
3	Metal Benches	\$1,000.00	\$3,000.00
2	Playground	\$40,000.00	\$80,000.00
1	Portable Toilet	\$500.00	\$500.00
1	Hockey Rink (w/lights)	\$60,000.00	\$60,000.00
2	Trash Receptacle	\$500.00	\$1,000.00
1	Flag pole w/ State and Federal Flags	\$2,000.00	\$2,000.00
<b>Sub-Total:</b>			\$465,500.00

Rice Ballfields			Existing Facilities
Qty	Description	Unit Price	Total Price
	Land (~15 acres)	\$15,000.00	\$225,000.00
2	Ball Fields	\$15,000.00	\$30,000.00
2	Lighting (Ball Field)	\$100,000.00	\$200,000.00
1	Playground	\$10,000.00	\$10,000.00
1	Picnic Shelter	\$25,000.00	\$40,000.00
1	Maintenance/Concessions Building	\$80,000.00	\$80,000.00
1	Gravel Parking Lot	\$15,000.00	\$24,000.00
3	Bleachers	\$6,000.00	\$18,000.00
3	Picnic Table	\$500.00	\$1,500.00
<b>Sub-Total:</b>			\$628,500.00

Lions Park		Existing Facilities	
Qty	Description	Unit Price	Total Price
	Land (~2 acres)	\$15,000.00	\$30,000.00
3	Picnic Tables	\$500.00	\$1,500.00
1	Water Pump	\$2,000.00	\$3,200.00
1	Stone/Wood Railing	\$2,000.00	\$2,000.00
1	Entry Monument (with 3 Flag Poles)	\$2,500.00	\$2,500.00
1	Asphalt Parking Lot	\$10,000.00	\$10,000.00
1	School Drop-off Point	\$0.00	\$0.00
1	Farmers Market	\$0.00	\$0.00
		<b>Sub-Total:</b>	\$49,200.00

The total estimated value of the three facilities currently included in the City of Rice’s park system is approximately \$1,143,200.00

*this page intentionally left blank*

### 3. TRENDS/PUBLIC VALUES

#### PUBLIC INPUT

It is important to the City of Rice to incorporate public involvement in the master planning process to ensure that the document reflects the values and interests of the community.

A Park and Trail Master Plan Steering Committee, consisting of thirteen community residents, was created and engaged throughout the process to provide input. Additional input was gathered from the public through a survey done during the city’s comprehensive planning process, and through two open house meetings that occurred as part of this master planning project. Meeting details and the results of this survey can be found in **Appendix A**.

#### DEMOGRAPHICS

The following demographics, from the U.S. Census Bureaus, paint a picture of the population make up of Benton County and potential users of the City of Rice’s local parks and trails system. (Data for the City of Rice alone was not available through the Census)

Population		
Population Estimate: July 1, 2016	Census (Estimate Base): April 1, 2010	Percentage Change from April 1, 2010-July 1, 2016
<b>39,992</b>	<b>38,451</b>	<b>+4.0%</b>

Age Distribution (Percent) - July 1, 2016			
Persons under 5 years	Persons under 18 years	Persons 65 years and over	Female Persons
<b>7.1%</b>	<b>24.7%</b>	<b>14.6%</b>	<b>49.9%</b>

Families, Living Arrangements, and Income (2011-2015)		
Households 2011-2015	Persons per Household	Median Household Income (2015 dollars)
<b>15,632 total</b>	<b>2.45</b>	<b>\$52,178</b>

Education and Workforce (2011-2015)			
High School Graduate or Higher (Age 25+)	Bachelor’s Degree or Higher (Age 25+)	In Civilian Labor Force (Age 16+)	In Civilian Labor Force, Female (Age 16+)
<b>91.5%</b>	<b>21.5%</b>	<b>70.8%</b>	<b>65.6%</b>

Source: U.S. Census Bureaus estimates  
Numbers based on April 1, 2010 Census

## RECREATIONAL TRENDS AND PUBLIC VALUES

*The following section is an excerpt from the “Greater Minnesota Regional Parks and Trails Strategic Plan,” adopted by the Greater Minnesota Regional Parks and Trails Commission on April 22, 2015.*

A key factor in making sound resource allocations is basing decisions on reliable information related to participation trends and changes in demand for various types of outdoor recreational facilities. Review of available research findings proved enlightening but also limiting, with the following being the most pertinent.

### **PARKS AND TRAILS: A HISTORY OF SUPPORT AND SUCCESS IN MINNESOTA**

Each year, state and regional parks and trails receive tens of millions of visits, with Metro-regional parks and trails alone receiving an estimated 40 million+ visits. In 2009, there were 8,926,000 visits to the state park system, including nearly 1,082,000 campers and other overnight guests. Eighty-four percent of the visitors are Minnesota residents. Some 30% of all Minnesotans visit a state park at least once each year – a number that DNR is committed to increasing. In Greater Minnesota, many millions more use local and regional parks and trail, although no formal counts currently exist.

Based on 2007 research by DNR, satisfaction ratings of Minnesota State Parks visitor experiences are at an all-time high. Although traditional outdoor activities have indeed seen varying degrees of per capita decline in participation, new trends – such as providing “high service” items like park programs that cater to children and the opportunity to rent equipment and attend special events – are increasingly popular with many families and are bringing new populations to parks.

Clearly, Minnesotans across the state value parks and trails and find them important to their quality of life. Voter approval of the Legacy Amendment further reinforces Minnesotans’ general commitment to preserving the natural qualities of the state and having access to quality parks and trails. This history of success provides a sound platform to work from as the Commission considers how to best allocate its future resources in ways that will have lasting value to Minnesotans.

### **BUILDING ON PAST SUCCESS REQUIRES RECOGNIZING AND ADDRESSING CHALLENGES**

Importantly, building upon past successes and furthering the cause for parks and trails in Minnesota requires an understanding (and recognition) of new challenges, evolving trends, and changing participation patterns in outdoor recreation. With overall participation over the past decade flat or even in decline, paying attention to key trend indicators cannot be taken lightly if the Commission is to ensure that future investments of time and resources are well-targeted. The following highlights some of the trend indicators to pay attention to and address through informed investments.

### **PARK-RELATED/GENERAL FINDINGS**

Review of available park-related research findings proved enlightening as well, with the following considered the most pertinent findings. As with trails, DNR park-related research provides some interesting and at times discouraging findings, including:

- Nature-based recreation participation is showing signs of decline – since the 1990s, the state is exhibiting declining participation on a per-capita basis; decline is broad based and national in scope, and relates to Minnesota State Parks, national parks, and state trails
- Minnesota’s participation rate decline is less negative – as compared to all the state and national per-capita figures\* are negative, the Minnesota figures tend to be less negative, declining at a per-capita basis of 10 to 12 percent
- Visitation shift to older adults poses longer term concerns – the age-class changes for Minnesota State Parks from 2001 to 2007 show visitation is shifting away from young adults and their children to older adults; median age of visitors has increased over 4 years, while the background population has increased just 1.4 years; an important implication of the decline in childhood visitation is the effect it may have on later-life visitation and participation

### **PARK FACILITIES COMPARISON**

Recommended park area (acres) guidelines have been established by the National Recreation and Park Association (NRPA). Rice’s park space (acres) and park amenities were also compared to similar size cities in central Minnesota to gain an understanding of how they relate in dedicated acres and park elements. Overall the Rice community meets or exceeds the recommended NRPA number of parkland acres per resident. Park amenities currently offered in Rice are slightly below the number of park amenities offered in similar sized central Minnesota communities.

## RICE PARK FACILITIES COMPARISON

POPULATION		RICE, MN 1,361		PIERZ, MN 1,371		DASSELL, MN 1,437		WAVERLY, MN 1,396		AVON, MN 1,466		WELLS, MN 2,272	
AMENITY TYPE	RECOMMENDED STANDARDS	recommended per 1,000 pop. Comparison		recommended per 1,000 pop. Comparison		recommended per 1,000 pop. Comparison		recommended per 1,000 pop. Comparison		recommended per 1,000 pop. Comparison		recommended per 1,000 pop. Comparison	
Community Parks (acres)	7 acres per 1,000 pop.	0	9.53	11.4	9.6			20.8	9.8			0	15.9
Neighborhood parks (acres)	3 acres per 1,000 pop.	17.34	4.1	11.665	4.1			30.5	4.2			35.96	6.8
Total (acres)	10 acres per 1,000 pop.	17.34	13.63	125.665	13.7			51.3	14			35.96	22.7

### Park Elements

Amphitheatre													
Base Ball											1		1
Baseball Field		1		2		1					1		2
Basketball Courts						2							3
Campground				1					2.5				
Canoe/ Boat Launch											1		
Electrical Outlets				1									
Farmers Market		1											
Fishing				1							2		
Football/ Rugby													
Gazebo				1							1		
Golf				4									1
Grills						1					2		
Hiking/ Walking Path													
Horseshoe Pits				1		2					6		
Open Play Field		1		1									
Outdoor Skating Rink/ Hockey		2		3							1		
Pavilion/ Shelter		3		3		4					2		1
Picnic Tables											7		
Playground		2		3		2					4		2
Pool/ Swimming Beach				1							1		1
Restrooms		1									2		
Running Track				1									
Skate Park													1
Soccer Fields											1		
Softball Field		2		4								4	4
Splash Pad												1	
Tennis Courts				4		2					1	2	
Warming House											1		
Water Slide				1									
Volleyball Courts				1							3		4

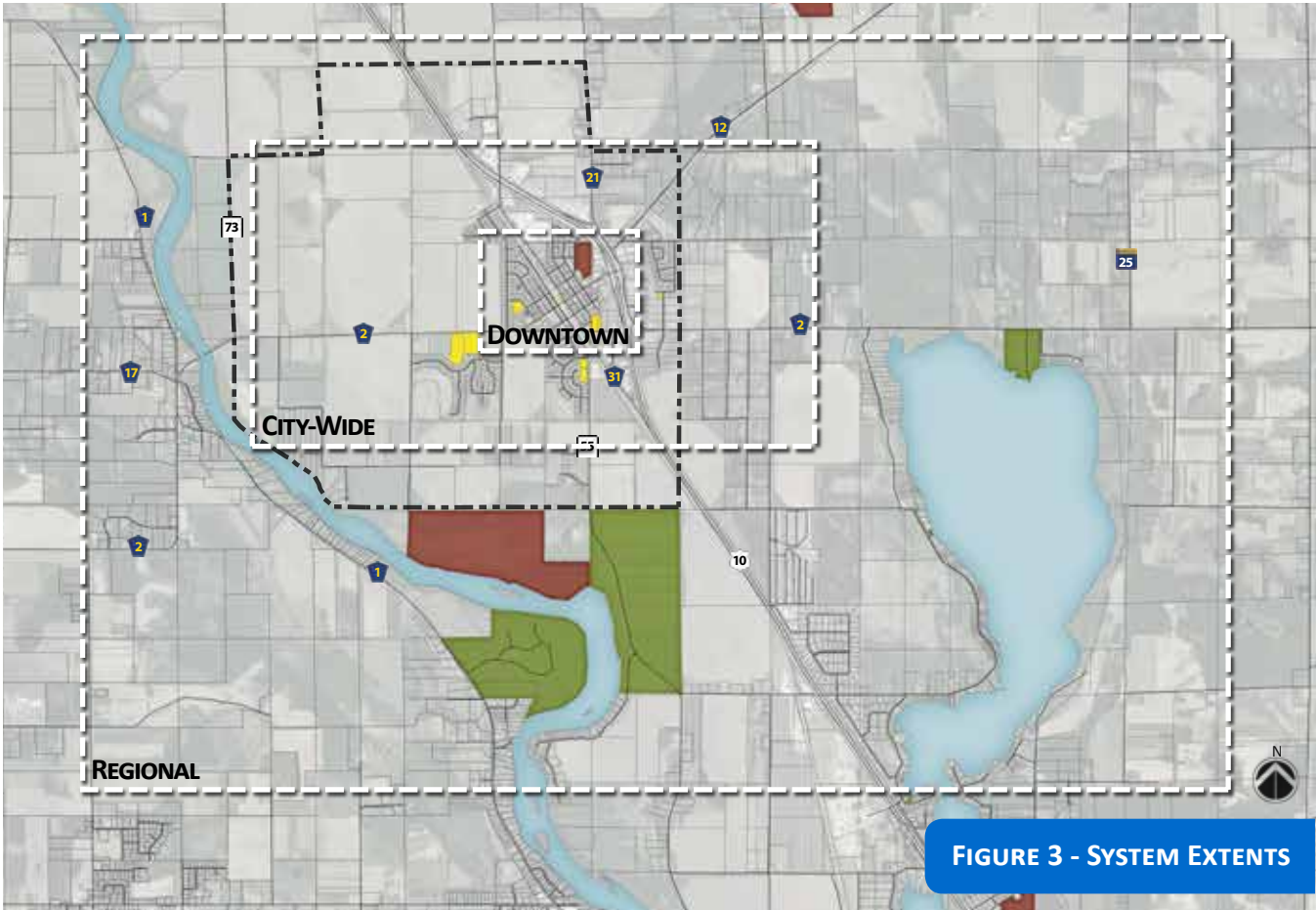


# MASTER PLAN RECOMMENDATIONS

Proposed recommendations are a key component of the Parks and Trails Master Plan. Input from the Rice Parks and Trails Master Plan Steering Committee and the general public (through survey responses and open houses) were used to identify potential park and trail improvements within the City of Rice and the surrounding area. These improvements were compiled into 3 systems that work collectively to create a robust parks and trails system in and around the City of Rice. These systems and the associated improvements are as follows:

- Regional System Recommendations (Page 27)
- City-Wide System Recommendations (Page 31)
- Downtown System Recommendations (Page 35)

Figure 3 below identifies the extents of the three systems (Regional, City-Wide, and Downtown).



*this page intentionally left blank*

## MASTER PLAN RECOMMENDATIONS

### SECTION 1: Regional System Recommendations

The City of Rice is within close proximity to a number of regional amenities that provide recreational and outdoor opportunities. Bend in the River Regional Park, Mississippi River County Park, and Benton Beach Park are all within a 2 mile proximity of Rice, and each offers unique amenities that are not available at city owned parks. In addition, the Mississippi River itself is an amenity that sits on the western edge of the city but is not directly accessible from within the city limits. The designated Mississippi River Trail (U.S. Bike Route 45) route passes through the heart of Rice, and should be looked at as an opportunity to enhance safe pedestrian travel routes for the community. Regional recommendations (**Figure 4**) aim to strengthen this connectivity. Projects within this section fall both inside and outside the City Limits of Rice, and adjacent to County owned roadways and privately held properties. Coordination between the City, County, and the various private land owners will be essential to the successful implementation of these regional recommendations.

There were five recommended improvements to the regional system identified by the steering committee which include the following (in order of priority)

1. Paved trail connection between the intersection of Main Street/1st Avenue and Bend in the River Regional Park
2. Off-street paved trail along CSAH 2 between the Mississippi River and downtown Rice
3. Develop a safe fishing platform on/near the bridge west of Benton Beach Park
4. Paved trail connection between downtown Rice and Rockwood Estates Trailer Park
5. Complete the trail connection between downtown Rice and Benton Beach Park

A more in depth description of each of these recommendations can be found on the following pages.



**PAVED TRAIL CONNECTION BETWEEN THE INTERSECTION OF MAIN STREET/  
1ST AVENUE AND BEND IN THE RIVER REGIONAL PARK** **1**



Currently, pedestrians wishing to access the Mississippi River via CSAH 2 use the shoulder adjacent to traffic traveling at high speeds. As part of the greater Mississippi River Trail, this segment of roadway between downtown Rice and Bend in the River Regional Park should include a separated trail, or large shoulders to accommodate biking and walking. Total length of trail required for this connection is approximately 2.0 miles.

**OFF-STREET PAVED TRAIL ALONG CSAH 2 BETWEEN THE MISSISSIPPI RIVER AND  
DOWNTOWN RICE** **2**



125th Street (CSAH 2) west of Rice is the city’s major linkage to the Mississippi River. This segment of roadway is also designated as part of the Mississippi River Trail (MRT) (U.S. Bike Route 45). Pedestrians wishing to access the Mississippi River via 125th Street use the paved shoulder adjacent to traffic with a 55 mph speed limit. In order to provide a safer travel route for users of the MRT and residents of Rice wishing to access the river, a paved off-street trail should be developed. Total length of trail required for this connection is approximately 2.0 miles.

**DEVELOP A SAFE FISHING PLATFORM ON/NEAR BRIDGE WEST OF BENTON  
BEACH PARK** **3**



Currently, pedestrians and bikers wishing to access Little Rock Lake and Creek via CSAH 2 use the roadway and extremely narrow shoulder adjacent to traffic traveling at high speeds. Due to existing conditions including limited right-of-way, steep slopes and wetlands, an independent multi-use trail is not currently feasible for the majority of this segment. A focus on creating a safe and accessible fishing area along this route should be pursued. Parking for the fishing platform should be included in any studies for this location. Work should be coordinated with Benton County to look for ways to add additional shoulder width and signage to reduce pedestrian conflicts.

## PAVED TRAIL CONNECTION BETWEEN DOWNTOWN RICE AND ROCKWOOD ESTATES TRAILER PARK

4

Residents indicated a preference to develop a paved off-street trail connection from downtown Rice to Benton Beach Park along 125th Street (CSAH 2). Currently, 125th Street lacks paved shoulders and makes reaching Benton Beach very dangerous for pedestrians. Potential trail improvements could be coordinated with future County roadway replacement. Total trail length from downtown to Rockwood Estates Trailer Park is approximately 2.75 miles.



## COMPLETE TRAIL CONNECTION BETWEEN DOWNTOWN RICE AND BENTON BEACH PARK

5



Currently, pedestrians wishing to access the Little Rock Lake and Creek via CSAH 2 use the shoulder adjacent to traffic traveling at high speeds. Due to the hydrology and limited Right-of way off-road trail improvements between 16th Ave. NW and Benton Beach Park are not feasible. For the 1.5 mile stretch of roadway and trail network, work with Benton County as the roadway is upgraded to look for opportunities to enhance pedestrian safety. This could include expanding the shoulder width, and adding signage indicating share-the-road logos.

## MASTER PLAN RECOMMENDATIONS

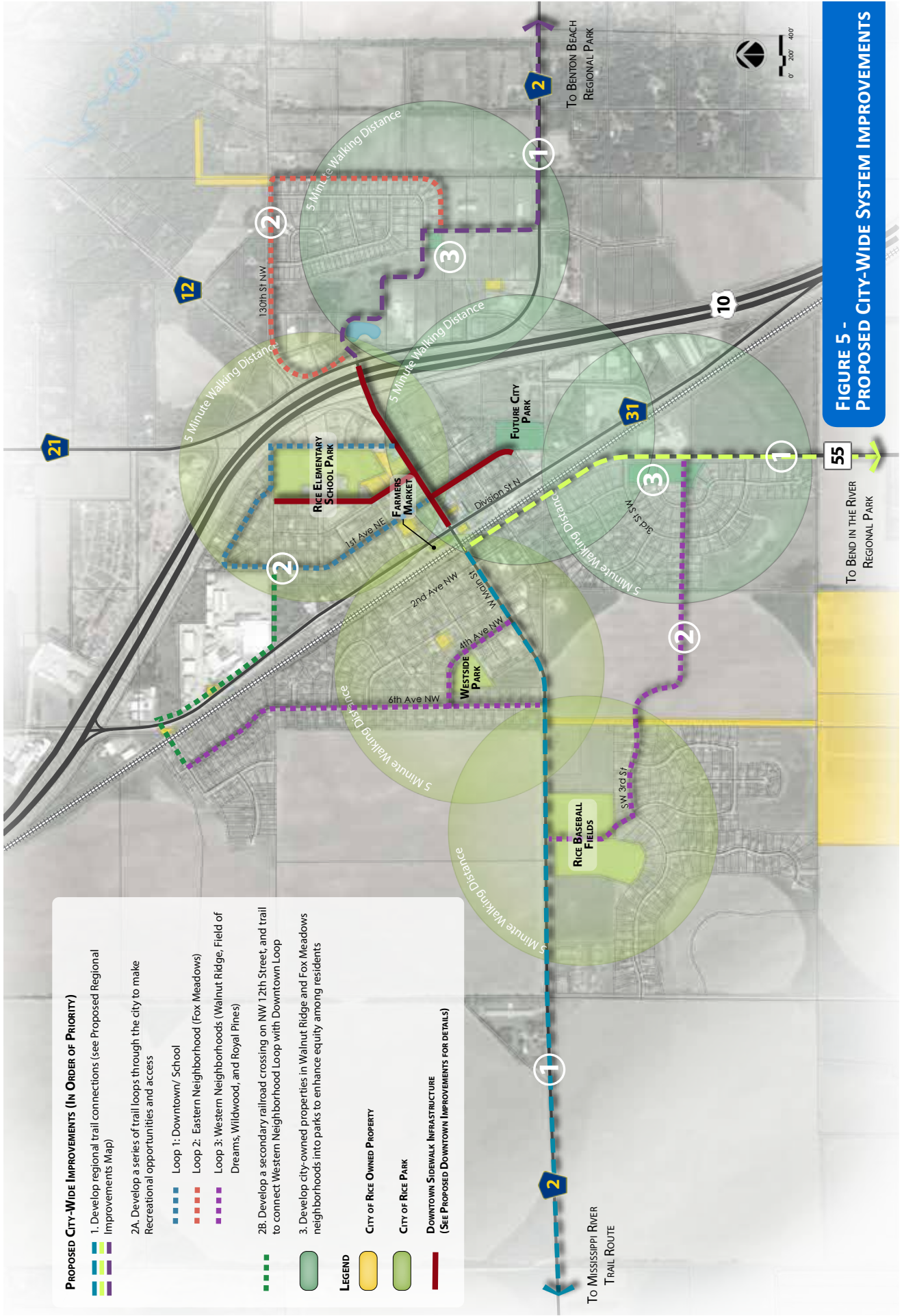
### SECTION 2: City-Wide System Recommendations

The City of Rice currently has three developed city parks within the city limits. These parks establish a solid base for the community. Pedestrian access to these existing parks is a major focus for the city-wide recommendations. Additionally, based on the existing park locations throughout the city limits, and a preference to have parks accessible to residents within a 5-minute walking distance, there is a need for more park development along the south and east sides of the city. These recommendations can be seen in **Figure 5**.

There were three city-wide recommendations identified and include the following (in order of priority):

1. Develop regional trail connections as a base pedestrian network throughout the city and beyond (See regional improvements)
- 2A. Develop a series of trail loops through the city to enhance recreational opportunities and access for all residents.
- 2B. Develop a secondary railroad crossing on NW 12th Street, and trail to connect the Western Neighborhood trail loop, with the Downtown trail loop.
3. Develop city-owned properties in the Walnut Ridge and Fox Meadows subdivisions into neighborhood parks.

A more in depth description of each of these recommendations can be found on the following pages.



**PROPOSED CITY-WIDE IMPROVEMENTS (IN ORDER OF PRIORITY)**

- Develop regional trail connections (see Proposed Regional Improvements Map)
- Develop a series of trail loops through the city to make Recreational opportunities and access
  - Loop 1: Downtown/ School
  - Loop 2: Eastern Neighborhood (Fox Meadows)
  - Loop 3: Western Neighborhoods (Walnut Ridge, Field of Dreams, Wildwood, and Royal Pines)
- Develop a secondary railroad crossing on NW 12th Street, and trail to connect Western Neighborhood Loop with Downtown Loop
- Develop city-owned properties in Walnut Ridge and Fox Meadows neighborhoods into parks to enhance equity among residents

**LEGEND**

- CITY OF RICE OWNED PROPERTY
- CITY OF RICE PARK
- DOWNTOWN SIDEWALK INFRASTRUCTURE (SEE PROPOSED DOWNTOWN IMPROVEMENTS FOR DETAILS)

**FIGURE 5 - PROPOSED CITY-WIDE SYSTEM IMPROVEMENTS**

To MISSISSIPPI RIVER TRAIL ROUTE

To BENTON BEACH REGIONAL PARK

To BEND IN THE RIVER REGIONAL PARK



**DEVELOP REGIONAL TRAIL CONNECTIONS AS A BASE PEDESTRIAN NETWORK THROUGHOUT THE CITY AND BEYOND (SEE REGIONAL IMPROVEMENTS)** **1**



Enhance pedestrian connectivity throughout the community by identifying critical routes, and using these routes to link residents to regional amenities including Bend in the River Park, Benton Beach, and the Mississippi River. Connections made within the community will serve local residents in accessing neighborhood parks and other community amenities, while linking up to outlying areas as well.

**DEVELOP A SERIES OF TRAIL LOOPS THROUGH THE CITY TO ENHANCE RECREATIONAL OPPORTUNITIES AND ACCESS FOR ALL** **2A**

A series of trail loops should be developed to aid residents in navigating the community safely. Three specific loops have been identified and prioritized as follows:

- Loop 1: Downtown/Elementary School Loop
- Loop 2: East of Highway 10 Loop (Fox Meadows neighborhood)
- Loop 3: Neighborhoods West of Highway 10 Loop (Walnut Ridge, Field of Dreams, Wildwood, and Royal Pines neighborhoods)
- These trail loops will serve as the base of the local pedestrian connectivity network and can be added to as needed.



**DEVELOP A SECONDARY RAILROAD CROSSING ON NW 12TH STREET, AND TRAIL TO CONNECT WESTERN NEIGHBORHOOD LOOP WITH DOWNTOWN LOOP** **2B**



Building off of recommendation 2A, the City should develop a secondary railroad crossing on NW 12th Street to further connect neighborhoods East and West of the railroad tracks. In addition to the pedestrian crossing, an additional segment of trail would connect the proposed West Neighborhood Loop, with the Downtown Loop. This trail would run south on Division Street, and connect to the east wherever there is opportunity to work with a willing landowner.

## DEVELOP CITY-OWNED PROPERTIES IN THE WALNUT RIDGE AND FOX MEADOWS SUBDIVISIONS INTO NEIGHBORHOOD PARKS

# 3



Currently, the majority of residents in northern and western Rice have access to a park within what has been identified as a 5 minute walking radius. In order to enhance equity among all residents of Rice, and provide park amenities to residents living in the Walnut Ridge and Fox Meadows subdivisions, land currently owned by the city should be developed into neighborhood parks. Amenities within these parks should be consistent with other neighborhood parks in the area, and coordinated with the neighborhood residents.

## MASTER PLAN RECOMMENDATIONS

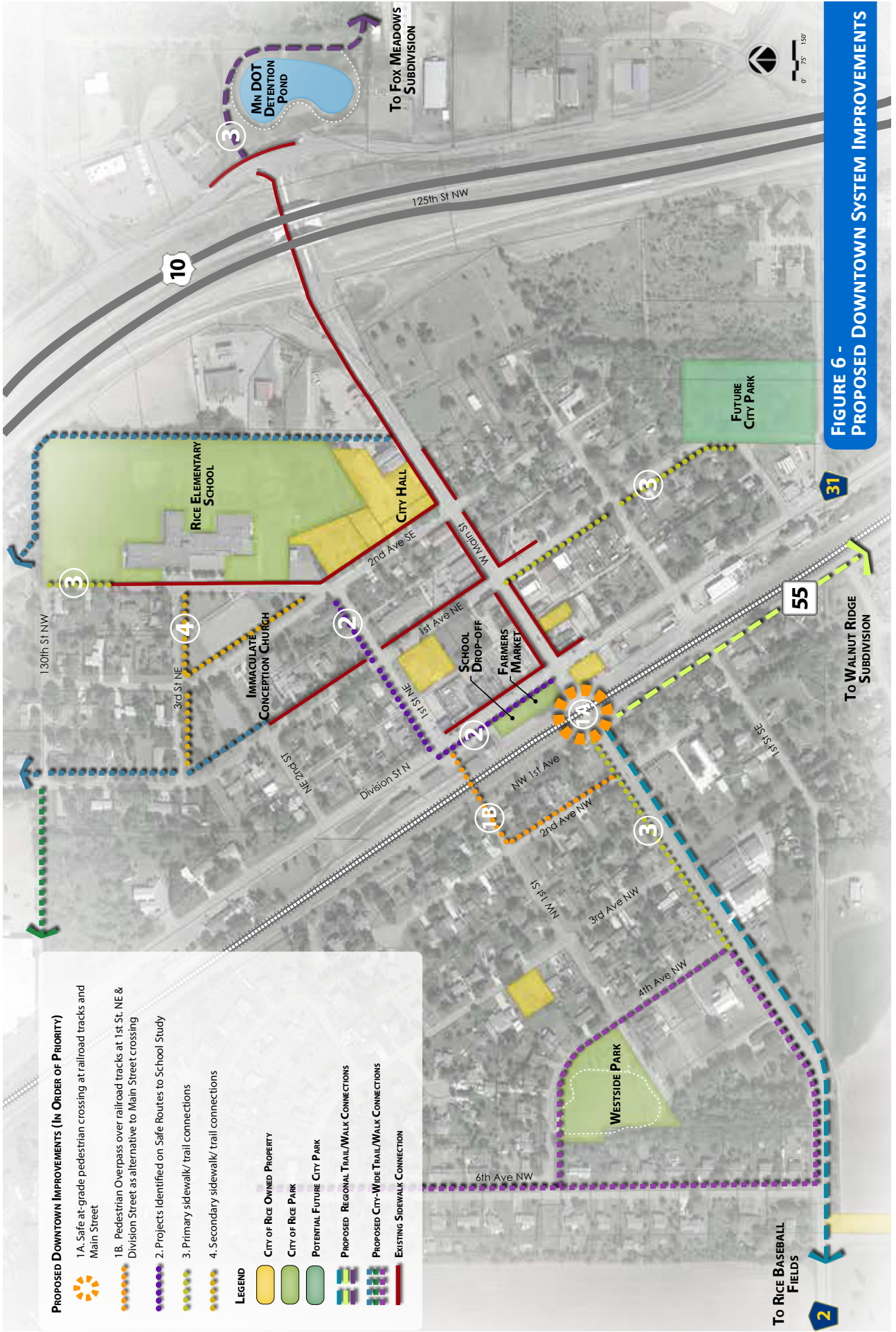
### SECTION 3: Downtown System Recommendations

Proposed downtown park and trail improvements focus largely on enhancing pedestrian safety within the downtown core of Rice. These improvements build off those laid out in the regional and city-wide recommendation sections to solidify the pedestrian network. Recommendations also build off those outlined in the Safe Routes to School report prepared previously for the City of Rice in 2016. Primary and secondary sidewalk improvements were identified based on proximity to the Elementary School, as well as developing safe connections from the school drop-off parking lot to the elementary school, and bridging the railroad tracks and providing safe connections between western neighborhoods and downtown Rice. These recommendations can be seen in **Figure 6**.

There were four downtown recommendations identified and include the following (in order of priority):

- 1A. Develop a safe & separated at-grade pedestrian crossing at the railroad tracks on Main Street in downtown
- 1B. Develop a pedestrian overpass crossing the railroad tracks near the intersection of Division Street & 1st Street NE as an alternative to the at-grade crossing on Main Street
3. Complete the projects identified in the Safe Routes to School report completed in 2016
4. Enhance the pedestrian connectivity within the downtown core by constructing primary sidewalk and trail segments
5. Further enhance pedestrian connectivity within the downtown core by constructing secondary sidewalk and trail segments

A more in depth description of each of these recommendations can be found on the following pages.



**PROPOSED DOWNTOWN IMPROVEMENTS (IN ORDER OF PRIORITY)**

- 1A. Safe at-grade pedestrian crossing at railroad tracks and Main Street
- 1B. Pedestrian Overpass over railroad tracks at 1st St. NE & Division Street as alternative to Main Street crossing
- 2. Projects Identified on Safe Routes to School Study
- 3. Primary sidewalk/ trail connections
- 4. Secondary sidewalk/ trail connections

- LEGEND**
- CITY OF RICE OWNED PROPERTY
  - CITY OF RICE PARK
  - POTENTIAL FUTURE CITY PARK
  - PROPOSED REGIONAL TRAIL/WALK CONNECTIONS
  - PROPOSED CITY-WIDE TRAIL/WALK CONNECTIONS
  - EXISTING SIDEWALK CONNECTION

**FIGURE 6 - PROPOSED DOWNTOWN SYSTEM IMPROVEMENTS**

**DEVELOP A SAFE & SEPARATED PEDESTRIAN CROSSING AT THE RAILROAD TRACKS ON MAIN STREET IN DOWNTOWN** **1A**



Identified by the community as the major priority of the master planning process, a safe pedestrian crossing should be developed at the intersection of Main Street and the railroad tracks in downtown Rice. Currently, pedestrians share a crossing with vehicular traffic with no separation, signage or signals. Additional analysis should occur to determine the best configuration for such a crossing, and coordination with the railroad should explore potential alternatives.

**DEVELOP A PEDESTRIAN OVERPASS CROSSING THE RAILROAD TRACKS NEAR THE INTERSECTION OF DIVISION ST. & 1ST ST. NE** **1B**

As a secondary alternative to an at-grade pedestrian crossing on Main Street, a pedestrian overpass across the railroad tracks should be explored. This crossing would occur one block north of Main Street, and span from the intersection of Division St & 1st St NE on the east side of the railroad tracks, to the intersection of 2nd Ave NW & NW 1st St. Coordination between the City, Railroad, and adjacent private land owners could identify the ideal alignment for the overpass.



**COMPLETE THE PROJECTS IDENTIFIED IN THE SAFE ROUTES TO SCHOOL REPORT COMPLETED IN 2016** **2**



Several projects were identified in the Safe Routes to School report completed for the City of Rice in 2016. Of these projects, filling the gaps in the sidewalk infrastructure downtown is one that could enhance safety for children accessing the elementary school at a relatively low cost. One major segment along 1st Street NE provides access from the school drop off location north of Lions Park to the school, and will require replacement of sidewalk along the entire block. Sidewalk should also be added along Division Street next to Lions Park and the School Drop off Lot.

### ENHANCE THE PEDESTRIAN CONNECTIVITY WITHIN THE DOWNTOWN CORE BY CONSTRUCTING PRIMARY SIDEWALK AND TRAIL SEGMENTS

3



Pedestrian connectivity within downtown Rice should be enhanced through the development of additional sidewalk and trail infrastructure. These sidewalk and trail improvements would aim to build on the existing system, and create a more walkable community. The majority of these improvements would strengthen east-west connections along Main Street west of the railroad tracks, as well as in the neighborhoods near Westside Park and the Future City Park south of downtown.

### FURTHER ENHANCE THE PEDESTRIAN CONNECTIVITY WITHIN THE DOWNTOWN CORE BY CONSTRUCTING SECONDARY SIDEWALK AND TRAIL SEGMENTS

4

The sidewalk and trail system within downtown Rice should be further strengthened through the addition of secondary sidewalk and trail segments. These segments would focus largely on the areas near the elementary school, as well as Westside Park.



*this page intentionally left blank*

*this page intentionally left blank*



## 6. IMPLEMENTATION & OPERATIONAL COSTS

### PROPOSED IMPROVEMENTS COST ESTIMATES

The following section identifies estimated costs associated with the proposed improvements included in section 4 (Master Plan Recommendations). Costs are broken down for each of the three systems identified (Regional, City-wide, and Downtown).

Proposed Regional Park Trail Segments				
Qty.	Unit	Description	Unit Price	Total Price
3	miles	Benton Beach Connection	\$200,000.00	\$600,000.00
2	miles	Bend in the River Connection	\$200,000.00	\$400,000.00
2	miles	Mississippi River Trail West Connection	\$200,000.00	\$400,000.00
1.9	miles	15th Avenue NW Trail West Connection	\$200,000.00	\$380,000.00
<b>Preliminary Total:</b>				\$1,780,000.00

Proposed City -Wide Improvements				
Qty.	Unit	Description	Unit Price	Total Price
1	lump sum	Regional Trail Connections (all 4 trail connections)	\$1,780,000.00	\$1,780,000.00
30000	feet	City Loop 1 (6' walk)	\$33.00	\$990,000.00
13000	feet	City Loop 2 (6' walk)	\$33.00	\$429,000.00
14000	feet	City Loop 3 (6' walk)	\$33.00	\$462,000.00
2	each	Neighborhood Park Improvements	\$150,000.00	\$300,000.00
<b>Preliminary Total:</b>				\$3,961,000.00

Proposed Downtown Improvements				
Qty.	Unit	Description	Unit Price	Total Price
1	lump sum	Pedestrian/Bike Railroad Crossing	\$300,000.00	\$300,000.00
250	feet	Safe Routes to School Sidewalk Improvements	\$33.00	\$8,250.00
11000	feet	Primary Sidewalk/Trail Connections	\$33.00	\$363,000.00
10000	feet	Secondary Sidewalk/Trail Connections	\$33.00	\$330,000.00
<b>Preliminary Total:</b>				\$1,001,250.00

## PROPOSED OPERATIONS & MAINTENANCE COST ESTIMATES

As additional amenities are added to the parks and trails system additional resources are needed to operate and maintain the parks and trails. It is recommended that the following items should be included in the city plan:

1. Existing Operations and Maintenance Plan shall document the following:
  - Explain maintenance procedures/practices
  - Describe current maintenance costs
  - Existing schedule
  - Existing concerns
  - Replacement/Upgrade schedule and life-cycle for existing amenities
2. Proposed Operations and Maintenance Plan shall document the following:
  - Document should describe proposed maintenance procedures
  - Document proposed life-cycle cost of additional elements
  - Document proposed schedule
  - Document funding source

It is recommended that the city plan a small percentage (3%-5%) of their annual parks and trails budget to maintenance to help offset the future needs and demands of the system. As the community's parks and trails system ages, funds should be set aside to assist with the life-cycle replacement costs associated with the system.

## 7. FUNDING

### LEGACY FUNDING

In 2008, voters in Minnesota passed the Clean Water, Land and Legacy Amendment (known in short as the Legacy Amendment). This Amendment was established to “enhance, and restore wetlands, prairies, forests, and fish, game, and wildlife habitat; to preserve arts and cultural heritage; to support parks and trails; and to protect, enhance, and restore lakes, rivers, streams, and groundwater.” (<http://www.legacy.leg.mn>)

The Legacy Amendment increases the state sales tax by three-eighths of one percent from July 2009 until 2034. Of the funds collected through the Legacy Amendment, 14.24% is directed toward the parks and trails fund.

Legacy Funding is one of the best ways to gain funding for park and trail projects that are of regional significance. Within the City Limits of Rice, the only projects that may benefit from Legacy Funding would be the establishment of a separated trail along segments of the Mississippi River Trail. This would be contingent on this segment of the trail gaining regional designation. The City should work with the System Plan Coordinator ([coordinator@gmrptcommission.org](mailto:coordinator@gmrptcommission.org)) at the Greater Minnesota Regional Parks and Trails Commission in order to work toward gaining this designation.

Outside of the City Limits, the additional segments of the Mississippi River Trail, west to the Mississippi River, and south to Bend in the River Regional Park should be targeted for Regional designation and ultimately, funding through the Legacy Amendment. Any required enhancements to the park itself should also seek this funding source.

### OTHER FUNDING SOURCES

**Local Trail Connection Grant**- funded thru the Minnesota Department of Natural Resources

**Regional Trail Grant**- funded thru the Minnesota Department of Natural Resources

**Federal Recreational Trail Grant**- funded thru the Minnesota Department of Natural Resources

**Local Road Improvement Program (LRIP)**- funded thru the Minnesota Department of Transportation

**Transportation Alternatives Program (TAP)**- funded thru the Minnesota Department of Transportation

**Minnesota Safe Routes to School (SRTS)**- funded thru the Minnesota Department of Transportation

**Statewide Health Improvement Partnership (SHIP)**- funded thru the Minnesota Department of Health

*this page intentionally left blank*

**APPENDIX A**  
**PUBLIC INPUT PROCESS**

*this page intentionally left blank*

# RICE PARKS & TRAILS PLANNING

The Rice Park Board and the Parks & Trails Planning Steering Committee are working to create a city-wide comprehensive parks and trails plan. We are kicking off the planning process with an open house and we'd like your input!

47



## OPEN HOUSE

### APRIL 18, 2017

### 6:00 PM

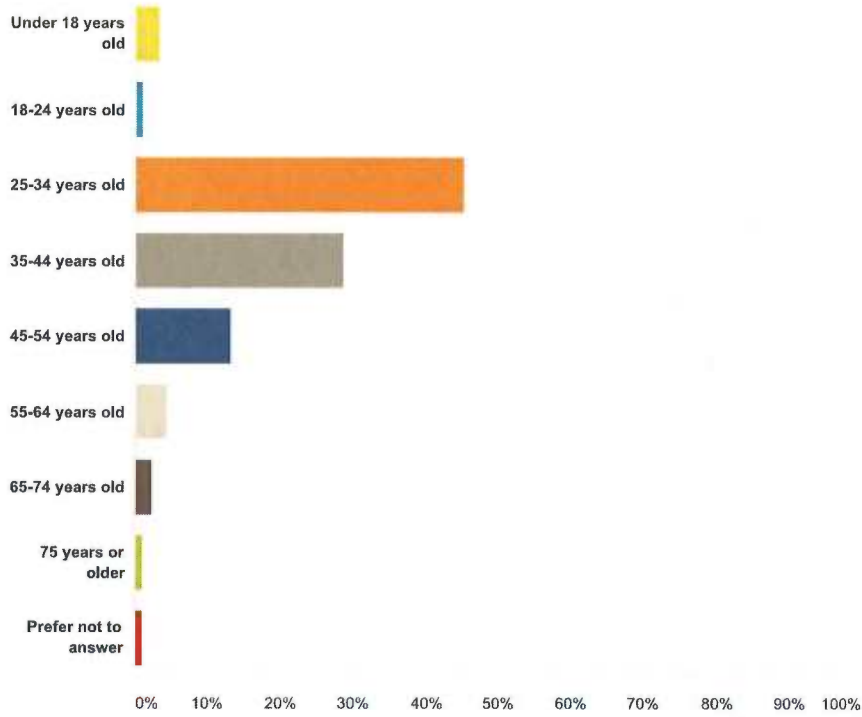
### RICE CITY HALL

RICE CITY HALL: (320) 393-2280

[WWW.CITYOFRICE.COM](http://WWW.CITYOFRICE.COM)

### Q1 What is your age?

Answered: 182 Skipped: 0



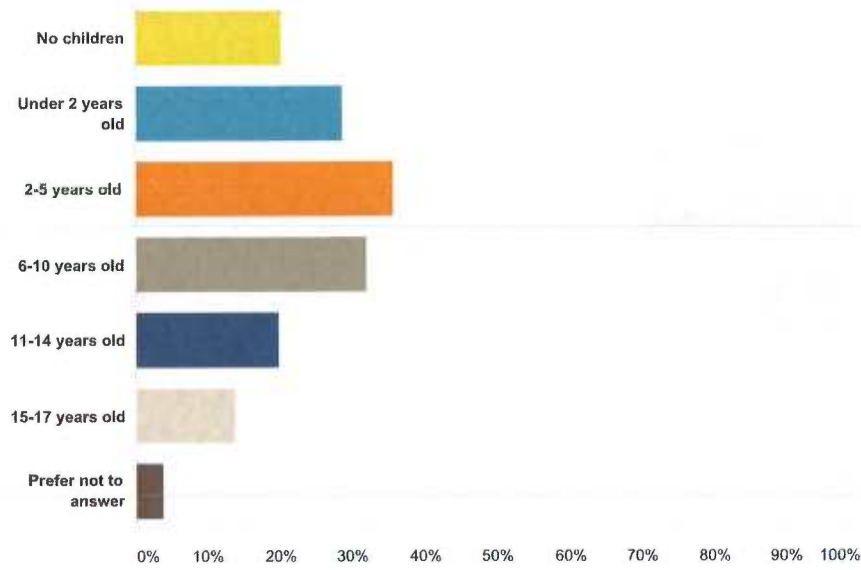
48

Answer Choices	Responses	
Under 18 years old	3.30%	6
18-24 years old	1.10%	2
25-34 years old	45.05%	82
35-44 years old	28.57%	52
45-54 years old	13.19%	24
55-64 years old	4.40%	8
65-74 years old	2.20%	4
75 years or older	1.10%	2
Prefer not to answer	1.10%	2
<b>Total</b>		<b>182</b>



**Q2 What are the ages of children living at the residence? Check all that apply.**

Answered: 182 Skipped: 0

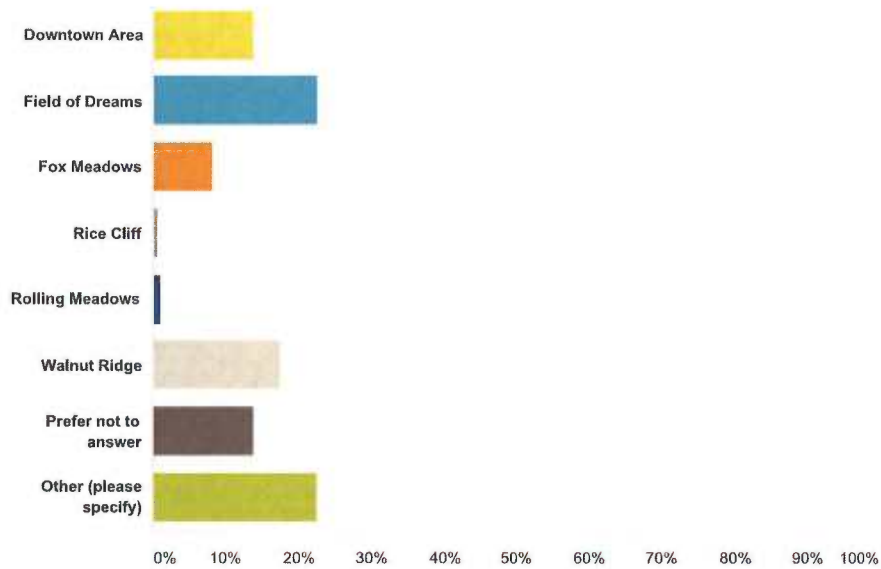


49

Answer Choices	Responses	Count
No children	20.33%	37
Under 2 years old	28.57%	52
2-5 years old	35.71%	65
6-10 years old	31.87%	58
11-14 years old	19.78%	36
15-17 years old	13.74%	25
Prefer not to answer	3.85%	7
<b>Total Respondents: 182</b>		

### Q3 Where in Rice do you currently reside?

Answered: 182 Skipped: 0



50

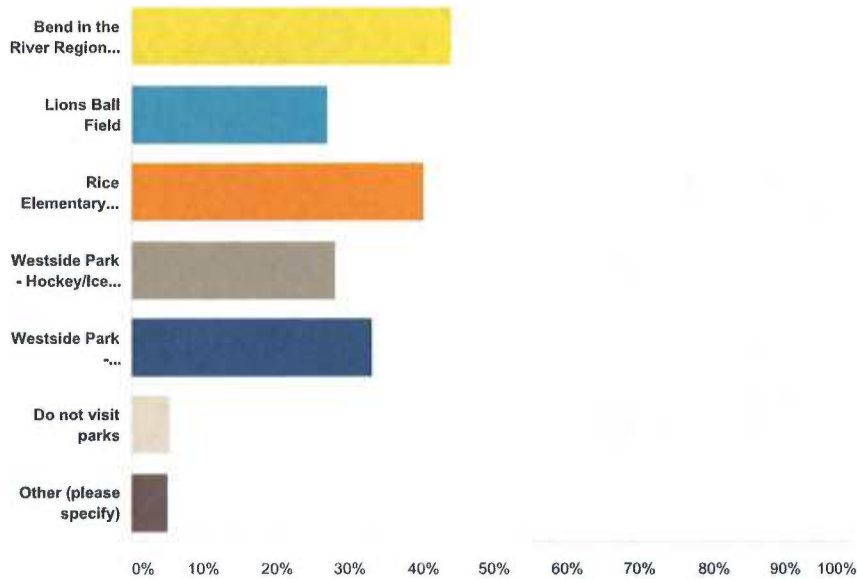
Answer Choices	Responses	
Downtown Area	13.74%	25
Field of Dreams	22.53%	41
Fox Meadows	8.24%	15
Rice Cliff	0.55%	1
Rolling Meadows	1.10%	2
Walnut Ridge	17.58%	32
Prefer not to answer	13.74%	25
Other (please specify)	22.53%	41
<b>Total</b>		<b>182</b>

#	Other (please specify)	Date
1	far north end	4/26/2016 8:06 AM
2	West park area	4/24/2016 8:53 PM
3	6th ave	4/14/2016 1:08 PM
4	near railroad tracks	4/13/2016 2:53 PM
5	Wildwood west.	4/9/2016 11:40 PM
6	Rural	4/8/2016 10:32 AM
7	Wildwood	4/7/2016 5:30 PM
8	.	4/7/2016 10:44 AM
9	Ball fields	4/5/2016 7:30 PM
10	West of tracks	4/5/2016 2:13 PM
11	edge of town	4/4/2016 6:18 PM
12	Watab township	4/3/2016 8:16 PM
13	6th Ave NW Rice	4/2/2016 6:37 PM

14	across from ferche not sure what my area is called	4/2/2016 3:34 PM
15	Development north of ice rink and lions building	4/1/2016 4:34 AM
16	Wildwood west	3/31/2016 5:47 PM
17	Oak hill	3/31/2016 12:01 PM
18	3rd st sw	3/30/2016 8:37 PM
19	Country	3/30/2016 7:55 PM
20	6th Ave NW	3/30/2016 7:31 PM
21	Out of city limits	3/30/2016 6:29 PM
22	Country	3/30/2016 6:21 PM
23	In country	3/30/2016 5:33 PM
24	Lakewood Shores	3/30/2016 4:55 PM
25	Main Street	3/30/2016 1:16 PM
26	Timberlane estates	3/29/2016 10:07 PM
27	Royal pines	3/29/2016 10:04 PM
28	Not sure on 6th Ave NW	3/29/2016 8:24 PM
29	Townhouses past the baseball field	3/29/2016 3:46 PM
30	Oak Hill Estates	3/29/2016 2:57 PM
31	6th Ave NW	3/29/2016 2:02 PM
32	main street	3/29/2016 1:38 PM
33	Rural Rice but utilize park & Rec	3/29/2016 1:12 PM
34	unsure	3/29/2016 12:58 PM
35	Watab	3/29/2016 12:43 PM
36	3rd ave NW	3/29/2016 12:41 PM
37	Off of Hwy 10	3/29/2016 12:35 PM
38	Lakewood Shores	3/29/2016 11:51 AM
39	Southview	3/24/2016 12:36 PM
40	Little Rock Lake	3/22/2016 5:11 PM
41	great river road	3/22/2016 4:05 PM

### Q4 Which park(s) do you visit most often?

Answered: 182 Skipped: 0



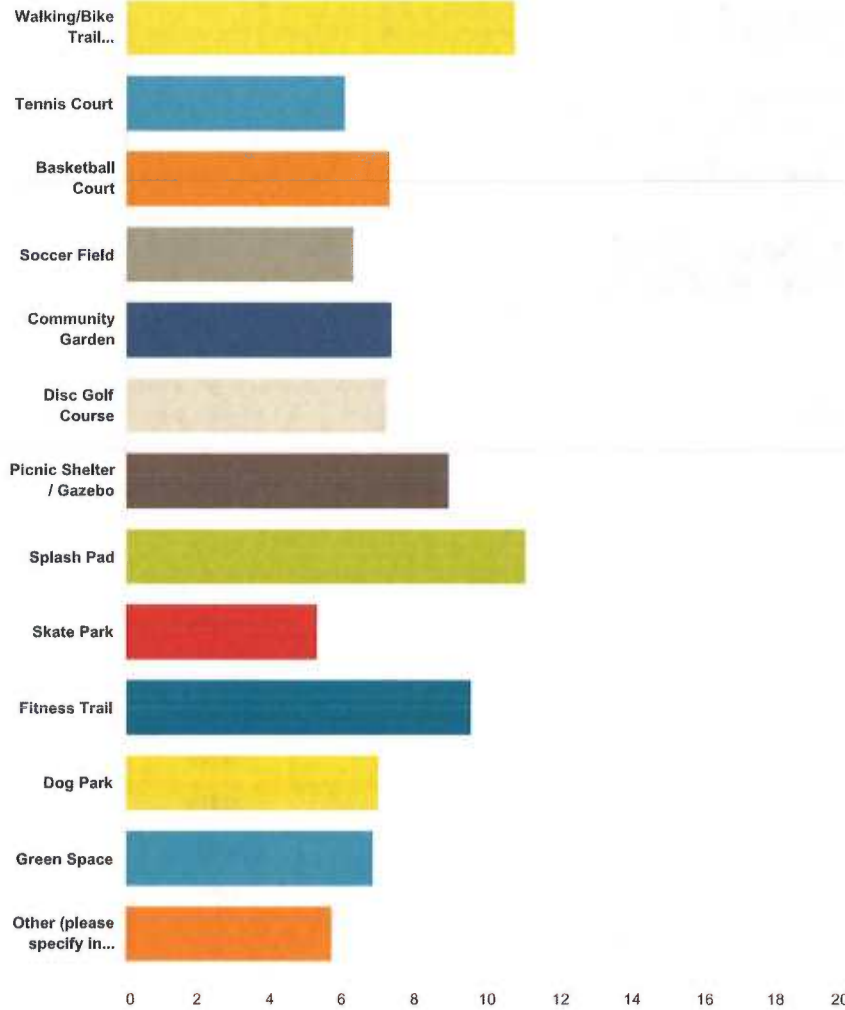
52

Answer Choices	Responses
Bend in the River Regional Park	43.96% 80
Lions Ball Field	26.92% 49
Rice Elementary Playground	40.11% 73
Westside Park - Hockey/Ice Skating Rink	28.02% 51
Westside Park - Playground/Trails	32.97% 60
Do not visit parks	5.49% 10
Other (please specify)	4.95% 9
<b>Total Respondents: 182</b>	

#	Other (please specify)	Date
1	Mississippi River Park	4/21/2016 7:40 PM
2	Benton beach park	4/3/2016 8:16 PM
3	South of Rice	3/30/2016 8:45 PM
4	Benton Beach park	3/30/2016 7:55 PM
5	We drive to bowlus for the bike trails	3/29/2016 4:33 PM
6	Go to St Cloud or Waite Park mostly for better equip/amenities	3/28/2016 9:45 AM
7	Royalton splash pad	3/22/2016 3:09 PM
8	Royalton splash pad/park the most!	3/22/2016 3:00 PM
9	Never have because none are close! We built here thinking one was coming in by Walnut Ridge. And we were told that also. ??	3/22/2016 8:36 AM

**Q5 Of the following, please rank in order which park feature(s) would be most appealing to you: (1=most appealing)**

Answered: 179 Skipped: 3



	1	2	3	4	5	6	7	8	9	10	11	12	13	Total	Score
Walking/Bike Trail	29.75% 47	25.32% 40	14.56% 23	8.23% 13	7.59% 12	3.16% 5	2.53% 4	3.80% 6	0.00% 0	0.63% 1	0.00% 0	3.80% 6	0.63% 1	158	10.78
Connecting Rice to Bend in the River Regional Park															
Tennis Court	3.39% 4	3.39% 4	2.54% 3	8.47% 10	9.32% 11	8.47% 10	7.63% 9	6.78% 8	11.86% 14	11.02% 13	10.17% 12	11.02% 13	5.93% 7	118	6.05
Basketball Court	7.63% 9	5.93% 7	8.47% 10	8.47% 10	8.47% 10	11.02% 13	11.02% 13	9.32% 11	4.24% 5	7.63% 9	5.08% 6	6.78% 8	5.93% 7	118	7.32
Soccer Field	0.91% 1	0.91% 1	5.45% 6	11.82% 13	4.55% 5	10.00% 11	10.00% 11	12.73% 14	13.64% 15	9.09% 10	16.36% 18	3.64% 4	0.91% 1	110	6.30
Community Garden	2.59% 3	5.17% 6	8.62% 10	12.93% 15	13.79% 16	11.21% 13	8.62% 10	6.90% 8	8.62% 10	5.17% 6	5.17% 6	6.90% 8	4.31% 5	116	7.33

2016 Rice Park Board Survey

SurveyMonkey

54

Disc Golf Course	5.83% 7	7.50% 9	9.17% 11	3.33% 4	10.83% 13	10.83% 13	9.17% 11	6.67% 8	10.00% 12	14.17% 17	7.50% 9	1.67% 2	3.33% 4	120	7.24
Picnic Shelter / Gazebo	6.02% 8	15.04% 20	15.04% 20	18.80% 25	7.52% 10	8.27% 11	6.02% 8	8.27% 11	5.26% 7	4.51% 6	3.01% 4	2.26% 3	0.00% 0	133	8.95
Splash Pad	48.25% 69	13.29% 19	10.49% 15	9.79% 14	6.29% 9	2.80% 4	1.40% 2	0.00% 0	0.70% 1	2.10% 3	0.70% 1	1.40% 2	2.80% 4	143	11.08
Skate Park	2.70% 3	1.80% 2	3.60% 4	6.31% 7	6.31% 7	6.31% 7	8.11% 9	8.11% 9	6.31% 7	9.91% 11	12.61% 14	22.52% 25	5.41% 6	111	5.32
Fitness Trail	8.82% 12	22.06% 30	19.85% 27	7.35% 10	13.24% 18	5.88% 8	5.15% 7	5.15% 7	4.41% 6	5.15% 7	2.21% 3	0.74% 1	0.00% 0	136	9.55
Dog Park	5.79% 7	8.26% 10	10.74% 13	9.09% 11	8.26% 10	4.13% 5	5.79% 7	7.44% 9	8.26% 10	10.74% 13	7.44% 9	6.61% 8	7.44% 9	121	7.03
Green Space	0.81% 1	6.45% 8	7.26% 9	7.26% 9	8.87% 11	10.48% 13	11.29% 14	13.71% 17	8.87% 11	6.45% 8	10.48% 13	8.06% 10	0.00% 0	124	6.83
Other (please specify in comments)	12.77% 6	10.64% 5	6.38% 3	4.26% 2	2.13% 1	6.38% 3	0.00% 0	4.26% 2	2.13% 1	0.00% 0	4.26% 2	2.13% 1	44.68% 21	47	5.74

**Q6 Comments about park features:**

Answered: 53 Skipped: 129

#	Responses	Date
1	All above are unnecessary. If people have so much free time on their hands do volunteer work (without pay). Why is it necessary to always be playing.	4/27/2016 2:44 PM
2	None of the above are of interest or necessity to me.	4/27/2016 2:39 PM
3	Safe playground equipment for all ages. Many of the current parks are not in the best condition. Especially Lions Park by the ball fields. When my older daughter plays t-ball her brother cannot play on the equipment because it's not safe.	4/22/2016 11:25 AM
4	Would love to see Rice add a Pickleball court just like the outdoor one in St. Cloud. No real interest in tennis, basketball, etc.	4/15/2016 8:55 AM
5	naturalized pollinator friendly wildflower areas	4/13/2016 2:53 PM
6	Playground equipment.	4/9/2016 11:40 PM
7	I would like to have a park within walking distance of our home with swings and slides for the kids.	4/8/2016 6:10 PM
8	We need to get the park in Fox Meadows.	4/6/2016 7:30 PM
9	A splash pad would be a great addition to Rice! There are no splash pads or wading pools unless you drive 20-25 minutes to get there.	4/6/2016 2:10 PM
10	That they should have 2 basketball courts and 2 tennis courts and 2 soccer fields. Also have a pool not a wading pool a pool you can dive and swim in.	4/5/2016 7:30 PM
11	A nice splash pad for all to enjoy and a good walking trail along river road or shoulder since it is so narrow for biking or running	4/5/2016 9:52 AM
12	So many people walk between bend in the river and Rice, it would be really nice to have a walking trail there. The road is a safety hazard	4/4/2016 6:18 PM
13	Walking trails connecting to the bend in the park or west to the bridge over the river would be safe and recreational. The shoulders on the roads now are so narrow. We need to expand our trails to our beautiful areas we have here. This would attract more people to move to rice.	4/4/2016 5:30 PM
14	Farmers Market	4/2/2016 6:37 PM
15	Walking trails connecting neighborhoods to nearest parks.	3/31/2016 6:23 PM
16	A nice splash pad and dog area would be perfect for this small community. We have nothing fun in the area for kids.	3/31/2016 5:47 PM
17	splash pad would be amazing, but I know they are very expensive. Walking paths would be very nice to help keeps kids from having to ride on public roadways.	3/31/2016 10:40 AM
18	Use anything and everything to make this happen. Let's start to build a community.	3/29/2016 11:42 PM
19	Put asphalt inside the boards at the hockey rink. We could use it in the summer playing roller hockey.	3/29/2016 10:02 PM
20	Big time yes to a connecting trail to the Bend in the River Park!	3/29/2016 9:16 PM
21	At/snowmobile park behind my house on 7th street NW please, so I don't have to stare at the empty lots anymore and can still drive back there!! Or a trail with parking lot that combines with the Soo line trail!!	3/29/2016 8:24 PM
22	Splash pad! So many young kids in Rice, we are either have to drive to Royallon or Lake George in St Cloud.	3/29/2016 8:23 PM
23	My son & I drive to the wobegon trail frequently in the summer to bike/rollerblade. I know we would use a safer trail everyday in the summer if it was available & possibly link up to the longer trails.	3/29/2016 8:01 PM
24	It would be nice to connect the small towns features with a walking path.	3/29/2016 7:20 PM
25	People have been part of this committee for years and nothing gets done. There's money in the park fund for each development to have a park, but where are the parks? We've lived in Rice for ten years and still no park near us.	3/29/2016 5:04 PM
26	Sartells walking paths are always busy, even in the rain/cold months. I really think a lot of Rice Residents would benefit from a walking path and it would be used by residents of all ages.	3/29/2016 5:00 PM
27	I would love to have a connection to Bend in the River Park. Such an asset but a pain to bike there with the River Road being so narrow and busy.	3/29/2016 4:33 PM
28	I'd love for a future park to include bbq spaces or a wading pool!	3/29/2016 3:46 PM
29	Nature play area, little fishing pond, big sand box, tree house playground, rock climbing area. Or an interactive science learning facility,	3/29/2016 3:33 PM
30	Good parking to provide room for social events	3/29/2016 3:22 PM
31	Good parking to provide room for social events	3/29/2016 3:21 PM

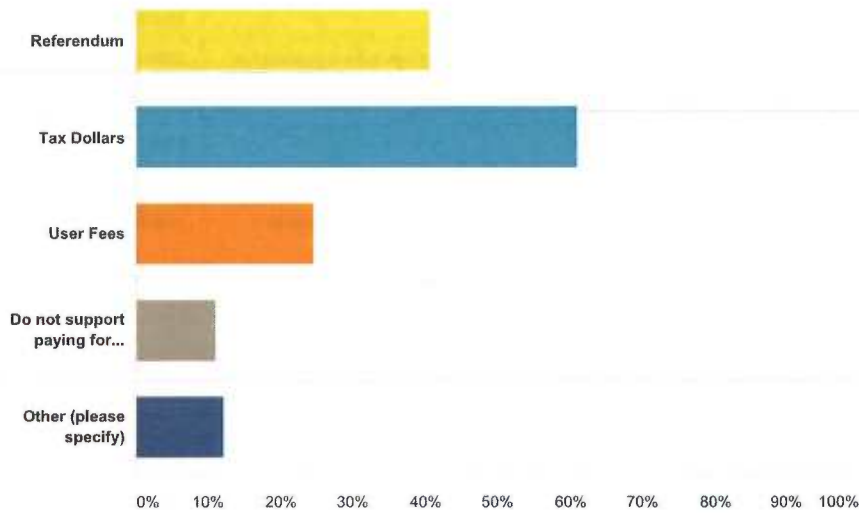
56

32	We need to think about activities for adults and older kids, to bring family back to rice.	3/29/2016 2:20 PM
33	Swimming Pool	3/29/2016 1:38 PM
34	A skate park. I really think the young people need more places to do things. We have grandchildren and other young family members that would really benefit.	3/29/2016 1:14 PM
35	access to electrical plug ins (outside the buildings) at Ballfield. Nice picnic area but need electrical to work outside.	3/29/2016 1:12 PM
36	westside park is small and NEEDS new features	3/29/2016 12:58 PM
37	None	3/29/2016 12:43 PM
38	Swimming pool	3/29/2016 12:41 PM
39	Pool not just a splash pad	3/29/2016 12:35 PM
40	We spend more time in other communities using their parks then here in Rice. With young kids there is no safe place to bike or walk without worrying about cars. Bend in the river is nice for a short walk. Wish there was a swing set. A tar path for biking and rollerblading, anywhere in town would be amazing.	3/29/2016 12:34 PM
41	Play structure.	3/29/2016 12:06 PM
42	we need things for the kids of all ages to do.	3/29/2016 11:48 AM
43	Would love to see an outdoor Pickleball court similar to one at Calvary Hill in STC. Seems to be very popular at Whitney center and is the fastest growing sport in America.	3/28/2016 9:45 AM
44	To go along with the splash pad & picnic area idea, some sort of feature that provides shade would be great. I imagine benches and tables with awnings similar to what the Waite Park splash pad has so the kids can play and mom and little one can stay in a cool and shady spot.	3/25/2016 12:48 PM
45	I would love to see more areas of rice connected with walking paths to the parks/recreation areas that are in existence.. To bring the community together to these activities.. There are limited access to these areas for family walking/biking	3/24/2016 2:07 PM
46	Bathroom with changing table	3/24/2016 12:36 PM
47	Walking/bike trails should be a priority.	3/22/2016 7:47 PM
48	There are plenty of places to walk in Rice. I think with the growing community of families with children.... More, bigger and up-to-date play ground equipment is needed.	3/22/2016 6:28 PM
49	A walking trail would be a great feature and asset to Rice!	3/22/2016 12:15 PM
50	Splash pad would be great! Would love to see it close to the developments	3/22/2016 8:36 AM
51	Playground	3/22/2016 8:16 AM
52	Side walks throughout the developments leading to town.	3/21/2016 8:02 PM
53	A park in my neighborhood in which all neighborhoods should have	3/21/2016 7:56 PM



**Q7 Since different projects can widely vary in cost and cannot be completed within the current Park Board budget, how would you support paying for additional park amenities?**

Answered: 182 Skipped: 0



Answer Choices	Responses	Count
Referendum	40.66%	74
Tax Dollars	60.99%	111
User Fees	24.73%	45
Do not support paying for additional park amenities	10.99%	20
Other (please specify)	12.09%	22
<b>Total Respondents: 182</b>		

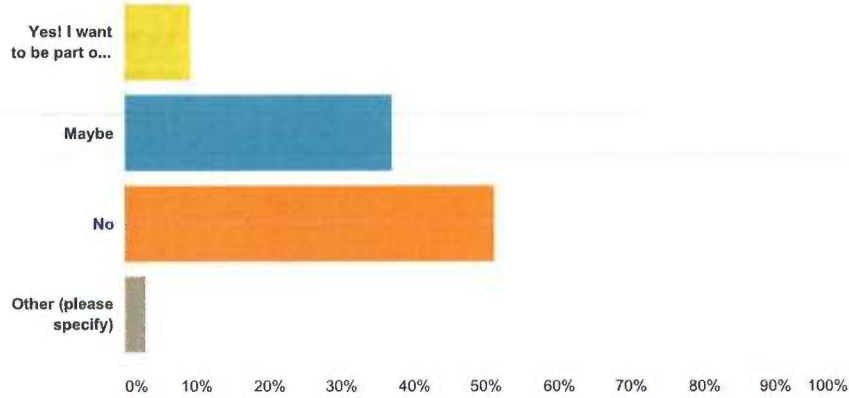
#	Other (please specify)	Date
1	Let people who use parks pay their way.	4/27/2016 2:44 PM
2	Fundraisers	4/21/2016 7:40 PM
3	Fundraising	4/8/2016 6:10 PM
4	Fundraisers or donations/lottery	4/4/2016 6:18 PM
5	Minnesota lottery funds	4/3/2016 8:16 PM
6	Fund raising / donations	4/3/2016 7:32 PM
7	Donations	4/1/2016 8:35 PM
8	Grants	3/31/2016 6:23 PM
9	Use anything and everything to make this happen. Let's start to build a community.	3/29/2016 11:42 PM
10	.	3/29/2016 8:23 PM
11	donations at local gasstation or McDonald's	3/29/2016 3:39 PM
12	If doing a garden park, make it an annual plant day, have schools involved and get kids outside to help plant the flowers in the spring, flowers donated by community or businesses. Have a summer ag program to keep the kids involved and taking care of the plants, make it a community Ed program that charges which will help with funds as well.	3/29/2016 3:33 PM

13	Could also find business/private sponsors to help	3/29/2016 2:20 PM
14	Fundraising event; grants.	3/29/2016 1:14 PM
15	Donations?	3/29/2016 12:34 PM
16	community fundraisers/ working with local businesses	3/24/2016 2:07 PM
17	Fundraiser	3/24/2016 12:36 PM
18	raise funds first	3/22/2016 6:27 PM
19	Grants, donations?	3/22/2016 12:15 PM
20	fundraising and volunteers	3/22/2016 8:16 AM
21	Fundraising and donations	3/21/2016 9:49 PM
22	Sales tax	3/21/2016 7:56 PM

58

### Q8 Are you interested in joining a committee to further develop the parks in Rice; including planning, organizing and fundraising?

Answered: 176 Skipped: 5



59

Answer Choices	Responses
Yes! I want to be part of making our city a better place!	9.09% 16
Maybe	36.93% 65
No	51.14% 90
Other (please specify)	2.84% 5
<b>Total</b>	<b>176</b>

#	Other (please specify)	Date
1	If parks would actually be built yes I would	3/29/2016 5:04 PM
2	I don't think I'm old enough	3/29/2016 3:39 PM
3	I'd like to, just very busy with 2 little kids and a new baby in a few weeks.	3/25/2016 12:48 PM
4	I would like to maybe be involved but I'm not good at speaking in front of people and things like that. I would be happy to help with a fundraiser, selling raffle ticket, or selling stuff at an event & volunteer in that way if needed. So depending on what it would all pan out to be I maybe willing to help in some way and maybe not.	3/22/2016 3:00 PM
5	Already joined	3/22/2016 6:40 AM

**Q9 Please provide your name, address, email address and/or phone number if you would like to be contacted about how you can get involved:**

Answered: 41 Skipped: 141

60

#	Responses	Date
1	Severin Ruprecht, 612 7th ave sw. rice mn. 56367 Juggernautsev@Jetup.net	4/30/2016 5:51 PM
2	Lauren Bourassa 311 3rd Street SW bubbalucreations@gmail.com	4/22/2016 11:25 AM
3	Keith Craft 393-3688	4/18/2016 1:56 PM
4	Denise Nolden 393-3390	4/13/2016 2:53 PM
5	Crystal Jonas 215 2nd St SW Rice MN bares81@hotmail.com 320-761-1107	4/8/2016 6:10 PM
6	Anne.s.kruchten@gmail.com	4/6/2016 2:10 PM
7	Mark Larson. 3203934100	4/5/2016 2:13 PM
8	Brent Johnson 708 11th Ave sw Rice MN56367 320-293-0912	4/5/2016 9:52 AM
9	Emily Busche 110 6th Ave NW Rice, MN 56367	4/2/2016 6:37 PM
10	Zach Bauer, 205 2nd Ave SW Rice MN 56367 baza0701@gmail.com, 320-420-0751	4/2/2016 5:13 PM
11	Joel Mayers joel_mayers@hotmail.com 320-761-5427	3/31/2016 10:40 AM
12	Bemace@gmail.com	3/30/2016 10:45 PM
13	Annette Squires 1023 6th Ave NW Rice MN 56367 320-894-4913	3/29/2016 8:24 PM
14	Nicole Neumann Nicole.neumann7777@gmail.com 320-309-2118	3/29/2016 8:01 PM
15	Jon Pressnall 805 8th street loop ne.	3/29/2016 7:20 PM
16	Tim Kuhl 512 11 yh Ave SW 320-492-3473 Tekuhlio@yahoo.com	3/29/2016 5:09 PM
17	Marcie Euteneuer 1405 3rd st SW marcieeuteneuer@yahoo.com	3/29/2016 5:02 PM
18	Clare Elyea 609 8th Ave SW Rice Elyeas.mn@gmail.com 320-828-0333	3/29/2016 4:33 PM
19	Meagan Haugeto mhaugeto@gmail.com	3/29/2016 3:46 PM
20	Christina Evje 115 wnd St. SW Rice 218-280-3788 cevje07@hotmail.com	3/29/2016 3:33 PM
21	Crystal Siltman, crydevon@msn.com	3/29/2016 3:22 PM
22	Crystal Siltman, crydevon@msn.com	3/29/2016 3:21 PM
23	Marty Golembeski 320-248-9486	3/29/2016 2:02 PM
24	Sheila Leblanc 100 6th Ave NW Rice MN 330-733-0943	3/29/2016 1:58 PM
25	Shelli Strzyk; 210 2nd Ave. SW; Rice, MN 56367. stsh0901a@gmail.com; (320) 333-3326.	3/29/2016 1:14 PM
26	Alex Provo, alexanderprovo@isd738.k12.mn.us	3/29/2016 12:58 PM
27	Kaylafaten@gmail.com	3/29/2016 12:49 PM
28	Amanda Pflipsen 240 division st n 320-250-8854	3/29/2016 12:13 PM
29	Chris Scheel 404 7th Ave SW Rice, MN 56367. I am only the city council already	3/29/2016 12:03 PM
30	Angela Caruth acaruth314@gmail.com	3/29/2016 11:46 AM
31	Cindy Larson 320-248-5412	3/29/2016 11:31 AM
32	Melissa Kosloski 813 11th Ave SW Rice MN 56367 melissakosloski@hotmail.com	3/25/2016 12:48 PM
33	Jill Herchenhahn 320267-1803 messagebyjh@yahoo.com	3/24/2016 2:07 PM
34	amberraesmith87@gmail.com 295 3rd St SE	3/24/2016 12:36 PM
35	Sandra Burski 15 2nd St NE Rice, MN 56367	3/23/2016 10:10 PM
36	Eric Loberg, 618 2nd Ave SW, lobey19@hotmail.com	3/22/2016 7:47 PM
37	Laura Douvier 616 10th Ave NE Rice, MN 56367	3/22/2016 6:28 PM
38	Laura Loberg 618 2nd Ave SW Rice Mn 56367 3202670827	3/22/2016 3:47 PM

39	Krista Rogers krista_hoadley@hotmail.com	3/22/2016 3:32 PM
40	Misty Sauer 492 3rd St. SW 320-248-5568	3/22/2016 3:00 PM
41	Amy Beierman 320-293-7550	3/22/2016 12:15 PM

**Q10 The Rice Park Board values your feedback. Please leave any additional comments regarding the current parks or development of future park amenities here:**

Answered: 49 Skipped: 133

62

#	Responses	Date
1	Trails are better than walking on the street. One in and around each addition would be nice.	4/27/2016 2:46 PM
2	You start with one park, then it will be another one. Who is going to pay to maintain these parks? You can't take care of the downtown park was once used for playing catch, frisbee and other yard games have been replaced with evergreens and park and ride. You can't park close enough to it. There are handicapped people who can't walk far.	4/27/2016 2:44 PM
3	Why add more? You must take care of the parks you already have.	4/27/2016 2:39 PM
4	Rice has enough parks.	4/27/2016 2:35 PM
5	I think a concentration should be on a walking path connecting East and West of the City of Rice. I would hope everyone agrees there is NO safe way to cross the busy RR tracks ANYWHERE. There is a reason there are paths crossing the tracks that are not at intersections. There are times the traffic is backed up on either side of the tracks 3 - 4 blocks long. Now add kids trying to cross the tracks on Main Street along with drivers trying to make a left turn south on 1st Ave. One driver telling a kid to cross while others are speeding over the tracks. Not a safe place. it is very dangerous however it seems the safety of the people of Rice is not as important as saving the parks and adding more.	4/24/2016 8:53 PM
6	There is a great space for a small park at the beginning of 3rd Street SW in Walnut Ridge development. There are a lot of kids in the area that would greatly benefit to having something near by.	4/22/2016 11:25 AM
7	If nothing new can be built, then I would recommend adding mulch to the playgrounds by the Lions Building.	4/21/2016 7:40 PM
8	I know there are some funds available for the Walnut Ridge Park. Last I heard I thought it was \$18,000. That would be enough to at least grow some grass/sprinkler system. Right now it is an eye sore for the Walnut Ridge community. The area should at least be maintained by the city.	4/18/2016 1:56 PM
9	Adding a bike/walking trail down the NE River Rd not only would give access to Bend in the River Park, but would make a scenic road safer for both drivers and bicycle riders/walkers using it. The road has NO edge to keep riders safely to the side and bike riding is a growing part of tourism that can't be ignored; people will be using the road to bike on anyway, that would just make it safe for everyone.	4/13/2016 2:53 PM
10	People need a safe place to ride bikes, walk and push strollers with their families.	4/8/2016 10:32 AM
11	We need to have a park put up on the Fox Meadows development. Accord to the developers there is money that they gave the city for the park.	4/6/2016 7:30 PM
12	Need something near Walnut Ridge	4/6/2016 4:15 PM
13	Walking bike trails to bend in the river park would be a great asset for rice. We need some recreational areas like every other town has.	4/5/2016 2:13 PM
14	We need walking, bike trails like almost every other city has. It will enhance our city and be an incentive for growth. It will also keep people safe and off the streets.	4/4/2016 5:30 PM
15	God bless your work---parks are one major key to developing a sense of community and evidence of putting PUBLIC back into our American way of life.	4/3/2016 1:09 PM
16	I really think this adds value to not only the people who live in the community but also to people who are thinking of moving into this community.	4/2/2016 6:37 PM
17	This is such a nice change for the City of Rice for asking the opinion in the above questionnaire of those that live here. Keep up the good work!!	4/2/2016 12:20 PM
18	Bathrooms	3/30/2016 7:51 AM
19	Need a splash pad for the kids they LOVE them! I am a grandparent who has lived in Rice for 20 years would have loved for my kids,now have granddaughter that could benefit.park at rice rink is awesome,good job	3/29/2016 10:07 PM
20	would be nice to see something happen with the area set aside in the walnut ridge development. even if that is green space.	3/29/2016 9:16 PM
21	More trees near and around rice and see if we can't combine the Sox Line trail!! Also try to make Rice a quiet zone for trains so they r not speeding and honking like crazy!!	3/29/2016 8:24 PM
22	The Field of Dreams needs a park, or make the ball field park bigger.	3/29/2016 8:07 PM
23	We need to create more healthy community spaces for activities. Any of these options would be a great addition.	3/29/2016 8:01 PM
24	There are so many families that walk on the roads, I'd love to see walking paths in town that are safer than being on the roads.	3/29/2016 7:38 PM

25	Bathrooms	3/29/2016 6:19 PM
26	Let's get to building some parks. I've only heard about parks being built here in Rice but haven't seen one yet in my 10 years of living in Rice.	3/29/2016 5:04 PM
27	Would also love to see sidewalk over tracks! It's scary to walk that way with my kids and I'm sure I'm not the only one who feels that way.	3/29/2016 5:00 PM
28	Need more bike friendly places for kids other than the street.	3/29/2016 4:33 PM
29	I know it's not a park feature but I'd love for the city to have sidewalks that aren't just in downtown	3/29/2016 3:46 PM
30	The current west park needs upkeep with filling in wood mulch, the equipment is still in good shape, there could be posts put up for volleyball use in the figure skating area. The park by the ball fields by field of dreams should be replaced because it's unsafe and looks like it's going to fall apart if a bigger person goes up to the top. Having sidewalks alone all through town would help with children being active riding bikes safely through town and especially at the railroad crossing. It would be a huge benefit to our community to have an area where older kids and younger kids can be physically active, keeping them busy and out of trouble.	3/29/2016 3:33 PM
31	I think that overall Rice needs to make itself better and safer to travel by foot, bike and roller skates.	3/29/2016 3:22 PM
32	I think that overall Rice needs to make itself better and safer to travel by foot, bike and roller skates.	3/29/2016 3:21 PM
33	I would worry a skate park would bring in trouble. Seems like they usually do, unfortunately.	3/29/2016 2:20 PM
34	Definitely needs a bike trail as there are always bikers on the narrow roads. Would like more walking paths.	3/29/2016 1:18 PM
35	Please consider outsourcing the youth activities (except softball) to Sauk Rapids Rice School district. Have the district staff the sports at Rice Elementary school. We may see better coaches and more consistency when moving to middle school sports.	3/29/2016 1:12 PM
36	I have lived here since my children were infants and my youngest is now 24. Money has been raised for years so it would be nice to see something done soon. At least then my grandchildren would benefit.	3/29/2016 12:41 PM
37	From little kids to teenagers, there is not many options for activity. Love the skating rink in winter but when it's flooded they shoot the water up in the air resulting in very bump, rough ice.	3/29/2016 12:34 PM
38	Keep working hard	3/29/2016 12:03 PM
39	I like the ideas that you are thinking about possible adding to the parks we already have and for the new parks. Just remember when thinking of areas for new parks the train tracks are a big problem for all kids	3/29/2016 11:48 AM
40	Thank you for addressing parks. It is a good first step to solicit feedback before proceeding!	3/28/2016 9:45 AM
41	A splash pad/park with a covered picnic area would be FANTASTIC!! Especially one that the kids and I could walk to. We'd use it all the time.	3/25/2016 12:48 PM
42	In the winter, it would be nice to have the warming house at the rink staffed earlier on weekends.	3/22/2016 7:47 PM
43	There should be a park over by Fox Meadows as there is already a park near field of Dreams; and there is the school. It has been my understanding from the owner of the land in Fox Meadows, there is a log that has been specifically reserved for a park? I would strongly support one in that particular lot!!!	3/22/2016 6:28 PM
44	With so many young children in the Rice area, I think planning another option for families is a great idea. We would love to see a splash park and also a nice place to get together with friends and family.	3/22/2016 3:32 PM
45	A bike/walking trail would be really great. Our roads are not that great in a lot of places & if they are there is a lot of sand & rocks on them. We like to Rollerblade & its had to find a nice surface to blade on. It would be very useful for all the families in Rice since there are a lot of families that walk & bike in the neighborhood!	3/22/2016 3:09 PM
46	I believe a splash pad would be so great! We always have to go to Royalton or St. Cloud & the St. Cloud ones are so busy. We have so many young families in Rice & a lot of young couples buying houses that haven't started having kids yet. It would really be a great opportunity to meet other families in Rice! The best thing would be a splash pad with a walking/bike trail going from that to the bend in the water national park. I drive that road everyday & there are so many walker/bikers on that road & it is dangerous for them. There are so many curves & you have to slow down almost to a stop at times cause there's a car coming & the biker/walker on your side of the road, it is not safe. A walking/bike path is much needed! There are so many families that walk in the evening in our neighborhood. It would be so nice to not keep yelling at your kid to stay to the side of the road when people don't respect neighborhoods with kids & they speed through them. We have been there for almost 11 years & we were promised a park back then in our addition my husband was even going to help build it & everything. Well it never happened. It's sad because now our child is 13 year old. We have two younger kids that are 2 & 4 now & they would love to have a splash pad, park, trail to go to!!	3/22/2016 3:00 PM
47	Thank you for your time	3/22/2016 8:36 AM
48	I think we need to get our kids off the roads and on sidewalks for their safety. Often I have to stop for kids in the middle of the road.	3/21/2016 8:02 PM
49	Updated equipment, maybe redoing a park or put in a splash pad	3/21/2016 7:56 PM

## **DRAFT**

### **Rice Comprehensive Parks & Trails Plan**

4/18/2017

#### **Steering Committee Kick-off Meeting Agenda**

64

1. Introductions
  - a. Contact information & communication
2. Discuss Purpose/Goals
  - a. Based on input from the Request for Proposal
  - b. Other goals?
3. Discuss Schedule and Process
  - a. Plan completion date of August 31, 2017
4. Review Existing Conditions/Inventory of Parks & Trails System
  - a. Parks, trails, sidewalks and open space
5. Discuss Existing Programs, Plans & Policies
  - a. Comprehensive plan, master plans, city/county policies & ordinances, etc.
6. Discussion of WANTS, NEEDS, OPPORTUNITIES & ISSUES
  - a. Review existing Community survey
  - b. Identify WANTS & NEEDS for both parks and trails
  - c. Identify ISSUES & OPPORTUNITIES for both parks and trails
7. Discuss Public involvement, Schedule & Marketing
8. Next Steps
  - a. Set next Steering Committee meeting (mid-June)
  - b. Set preliminary Open House #2 (July-August)
  - c. Other items?



## STEERING COMMITTEE MEETING 4/18/17

4:00-6:00 pm Rice City Hall

### Attendees:

Craig Gondeck, Sam Hageman, Ken Nodo, Greg Bruestle, Jerry Sauer, Chris Byrd, Mark Hauck, Kelly Desormey, Ross Hamann, Brian Skroch, Stephanie Roggenbuck, Ed Popp, Christina Bemboom, Phil Martin (BMI), Jon Nelsen (BMI), Joel Odens (BMI)

65

### MEETING NOTES:

1. The purpose and goals stated in the RFP for the Comprehensive Parks and Trails Plan were reviewed and participants were asked to review and communicate any additional comments for discussion as the plan progresses
2. The completion date of August 31, 2017 was reviewed and determined appropriate
3. The existing conditions and inventory of the parks and trails system was discussed
  - Regional Draws: Bend in the River Park, Benton Beach, Michaelson Farm (west of river), Mississippi River Park (west side of river)
  - Benton Beach includes: disc golf, fishing, camping, play equipment
  - Bend in the River Park Includes: scenic vistas, picnicking, bathrooms, running, hiking, biking trails. Park closes at 10.
  - City Parks: Rice Elementary School, Westside Park, Ball Park (baseball & Soccer), and Corner Park (Main St.)
  - Ball Park is ~6-8 acres. Soccer nets have been ordered.
  - The City also has several vacant lots available for further development (Walnut Ridge Park ~ 2 acres)
  - County Road 55/NE River Road is part of Mississippi River Trail (MRT) and should be identified. The road is heavily used by bikers/pedestrians. Would be nice to get a rough idea of number of users if possible.
  - Bend in the River Park needs to be utilized more
  - Safety issues crossing CR55 at Bend in the River Park
  - City currently has approximately \$36,000 in park dedication fees
4. Existing programs, plans and policies were briefly discussed.
  - The City currently has limited sidewalks and the policy of snow removal/maintenance was discussed. The maintenance and ownership of additional sidewalk/trail would need to be discussed with Council and the general public.
  - Sidewalks- No City or County restrictions on who uses sidewalks (Bikes are allowed)
  - It was determined the Rice Comprehensive Parks and Trails Plan would align with the Benton County Parks and Trails Plan as far as destinations and routes. This will assist with collaboration and funding.
5. Issues, Opportunities, Wants & Needs were discussed:  
Issues:
  - Safety along CR55 with additional truck traffic and pedestrians accessing the park
  - Safety along bridge on County Road 2 (125<sup>th</sup> St. NW) at Benton Beach (fishing) people park on the side of the road

- Railroad crossing for pedestrians
- Swampy land along CR2, may make it difficult to add amenities
- Crosswalks are not always honored...How to make them safer/more functional
- Trail/sidewalk & boulevard maintenance- determine who is responsible

#### Opportunities:

- Safety along CR55 with additional truck traffic and pedestrians accessing the park
- Coordinate with existing snowmobile trails/routes (Benton Co. Snowmobile Club)
- Benton Beach is booked solid in the summer
- City owns land in two subdivisions for parks
- St. Regents Park ½ acre lot with access to the lake
- Take a day off on the Mississippi-Annual event with busses running to parks on both sides
- Coordinate Parks and Trails Plan with Safe Routes to School
- Rice Elementary School improvements planned- coordinate with them
- Maybe have booths or info at Rice Park Bike Rodeo event in Late August and/or Rice Family Fun Days August 19.
- How to quantify visitors to Bend in the River...trail cam may be available? May help with funding

#### Wants:

- Pedestrian/Trail connection to Benton Beach
- Health equity low income populations able to access amenities (trailer park, etc.)
- Fishing pier attached to existing bridge structure at Benton Beach -Looking into options as County wants to talk to bridge engineers to see if it's an option
- 

#### Needs:

- Safety along CR55 with additional truck traffic and pedestrians accessing the park
- More sidewalk infrastructure throughout the City
- Playground improvements ADA Accessible

#### 6. Next Steps:

- Compare to cities of similar size...total park area in city limits or other comparisons.
- Pass along the Bend in the River Master Plan document to the group.
- Identify major trail/sidewalk routes/options
- Identify costs/values of land and infrastructure
- Maintenance/replacement costs for equipment/infrastructure
- Review safe routes to school document
- Research funding (Benton Communications Foundation Funding, etc.)
- Have preliminary plans for trails/walks laid out with estimates and priorities for next steering committee meeting in June

#### 7. Next Meeting:

4:00-6:00 pm Wednesday, June 21, 2017 (City Hall)

Comprehensive Parks and Trails Plan  
 Public Open House #1 - April 18, 2017  
 6-8 PM (Rice City Hall)  
 4-6

STEERING COMMITTEE

Name/Business	Address	Phone	Email
Cheryl Conossek	W. Arts	492-6814	Cheryl Conossek galileo@cc
Sam Hageman	Foley, MN	320-293-3209	shageman@co.benton.mn.us
KEN NOGO	911 10757NE Rice	320-393-2096 320-267-0027	KUNO & VICTOR.NET
Dreg Brustle	11825 16th Ave NW Rice, MN	393-2690	brustle@ cloudnet.com
JERRY SAMER	PO Box 151 RICE	393-4375	GENSAMER@JETUP.NET
Chris Byrd Benton Co	PO Box 247 Foley MN 56329	320-968-5051	Cbyrd@co.benton.mn.us
Mark Hauck ISD 47 - SR-R schools	1520 50th Ave NE Sauk Rapids MN 56379	520-420-3549	mark.m.hauck@gmail.com



**BOLTON  
& MENK**

Comprehensive Parks and Trails Plan  
 Public Open House #1 - April 18, 2017  
 6-8 PM (Rice City Hall)  
 4-6

~~STEERING COMMITTEE~~

Name/Business	Address	Phone	Email
KELLY DESORMEY	880 2ND ST CT SW RICE	218-213-7093	kdesormey@mnpower.com
Ross Hamann	205 E. Main St P.O. Box 179, Rice	320-250-4816	rhamann@cityofrice.com
Brian Skroch	140 Division St S Rice MN	320-393-2191	25skroch@gmail.com
Sophane Roggenbuck	912 10 <sup>th</sup> Ave NE Rice, MN 55367	320-760-5185	clerk@cityofrice.com
Ed Popp	15274 5 <sup>th</sup> Ave NE Rice MN	320-292-1832	epopp@Benton, CO, MN, US
Christina Bemboom Rice Elementary	Rice Elementary	320-266-2488	christina.bemboom@isd47.org



Comprehensive Parks and Trails Plan  
 Public Open House #1 – April 18, 2017  
 6-8 PM (Rice City Hall)

Name/Business	Address	Phone	Email
Chris Schuel	404 7th Ave SW	320-393-7847	Chris-Schuel@hotmail.com
Anne Pressnell	805 8th Street Loop NE	260-5476	
Jolii Hombos	508 9th Ave SW	320-360-1999	
Eric Loberg	618 2nd Ave SW	320-237-0519	lobey19@hotmail.com
Amy Staudinger	406 2nd Ave SW	320-761-1431	staudamy@gmail.com





**Rice Comprehensive Parks & Trails Plan**  
**Steering Committee Meeting Agenda**

6/21/2017

71

1. Introductions
  - a. Contact information & communication
    - a. Phil Martin, 218-825-0684 ext. 2864, phillipma@bolton-menk.com
    - b. Joel Odens, 952-890-0509 ext. 3025, joelod@bolton-menk.com
    - c. Jon Nelsen, 952-890-0509 ext. 2975, jonathanne@bolton-menk.com
2. Review Parks & Inventory
  - a. City Parks
  - b. County Parks
  - c. Private Parks
  - d. City Owned Lots (future parks)
  - e. Others?
3. Discuss Downtown Improvements
  - a. Parks
  - b. Trails
  - c. Priorities
  - d. Other unidentified wants/needs?
4. Discuss City-Wide Improvements
  - a. Parks
  - b. Trails
  - c. Priorities
  - d. Other unidentified wants/needs?
5. Discuss Regional Improvements
  - a. Parks
  - b. Trails
  - c. Priorities
  - d. Other unidentified wants/needs?
6. Review/Discuss Preliminary Costs
  - a. Parks (maintenance & development)
  - b. Trails (maintenance & development)

7. Discuss Funding
  - a. Alternatives
  - b. Schedule/timing
  
8. Next Steps
  - a. Set Steering Committee meeting #3/Open House #2 (July-August)
  - b. Other items?

**Link to Bend in the River Regional Park Master Plan:**

[https://www.co.benton.mn.us/Parks/BITR\\_Master\\_Plan.php](https://www.co.benton.mn.us/Parks/BITR_Master_Plan.php)

**The purpose of the Parks and Trails Plan is to:**

- Raise awareness of current parks, trails and safe routes to school opportunities.
- Work toward building an environment that makes active living an easily accessible option for all residents.
- Educate the community about the benefits of active living.
- Ensure that parks and trails meet the needs and desires of the community.
- Engage community members and community leaders and decision-makers to gather input on current conditions of parks and trails, as well as raise awareness of the needs and possible opportunities.
- Identify efficient routes and improvements to connect destinations within the area.
- Increase the safety of pedestrian and biking facilities within the area.
- Prepare a Comprehensive Parks and Trails Plan with recommended improvements to trails, routes, sidewalks, pedestrian crossings, parks and open spaces, way-finding and an implementation plan (priorities, cost estimates and funding options).



STEERING COMMITTEE MEETING 6/21/17

4:00-6:00 pm Rice City Hall

Attendees:

Craig Gondeck, Ken Nodo, Greg Bruestle, Jerry Sauer, Chris Byrd, Kelly Desormey, "Sam Hageman substitute", Brian Skroch, Stephanie Roggenbuck, Ed Popp, Christina Bemboom, Phil Martin (BMI), Jon Nelsen (BMI), Joel Odens (BMI)

73

MEETING NOTES:

1. Bolton & Menk (BMI) began the meeting with a review of the various maps that are being generated for the master plan. The maps and recommendations were discussed in the order below:
  - i) Facilities Location Map revisions
    - Remove all cemeteries from map
    - If possible show Sartell State WMA northeast of Rice
    - Label WMA adjacent to Bend in the River Regional Park
    - Show DNR boat launch SW side of Hwy 10 south side of Little Rock Lake
    - Show additional park in Sauk Rapids Township
    - Locate and label Rossana Beach
    - Change "Privately Owned Parks" to "Other Facilities"
  - ii) Proposed Downtown Improvements Map revisions
    - Replace "Wetland" label with "Potential Future Park"
    - Show entire two blocks of 1<sup>st</sup> St. NE as receiving new sidewalk/trail between Division St. and 2<sup>nd</sup> Ave. SE (Rice Elementary) as it needs replacing anyway
    - 1<sup>st</sup> Ave. NE sidewalk is on east side of the street (revise segment between 1<sup>st</sup> and 2<sup>nd</sup> St.)
    - Modify trail connection north of 4<sup>th</sup> Ave. NW to Primary Sidewalk/Trail Connection from Secondary
    - Add Secondary sidewalk/trail to north side of Main St. between 4<sup>th</sup> Ave. NW and 6<sup>th</sup> Ave. NW
  - iii) Proposed City-Wide Improvements Map revisions
    - Revise the east pedestrian loop to pass in front of lots west of 9<sup>th</sup> Ave. NE
    - Reorder the loop priorities (loop 1= downtown, loop 2= east loop, loop 3= west loop)
    - It was agreed the order of priorities for city wide improvements are as follows; develop regional trail connections, develop a series of City loops, develop City owned properties into parks
  - iv) Proposed Regional Improvements Map revisions

- Reprioritize the improvements; connection to Bend in the River Park first, connection to Mississippi River along CSAH 2 west from downtown, fishing pier on CSAH 2, connection to Rockwood Estates from downtown and lastly is the paved connection from 15<sup>th</sup> Ave. NW to Benton Beach Park

2. BMI reviewed the draft existing park infrastructure data and value. It was estimated the three Rice parks infrastructure value is approximately \$1.2 million, with an estimated annual maintenance cost of \$45,000.
3. Next BMI described the estimated costs of the items listed on the three various improvement maps (Downtown, City-wide, and Regional). The estimated full build-out cost for the parks and trails system would be approximately \$4 million. This does not account for any land acquisition.
4. Funding was then discussed. It was determined to investigate Federal (TAP) Transportation Alternative Programing Funds and Minnesota Legacy Funds. BMI will contact the Minnesota Legacy System Plan Coordinator to set up a meeting to discuss the project.
5. Next Steering Committee Meeting:  
4:00-6:00 pm Wednesday, August 9, 2017 (City Hall)
6. Next Open House:  
6:00-7:30 pm Wednesday, August 9, 2017 (City Hall)

Rice Comprehensive Parks & Trails Plan  
**Steering Committee Meeting Agenda**

8/9/2017

75

1. Introductions
  - a. Contact information & communication
    - a. Phil Martin, 218-825-0684 ext. 2864, phillipma@bolton-menk.com
    - b. Jon Nelsen, 952-890-0509 ext. 2975, jonathanne@bolton-menk.com
2. Review Parks & Inventory
  - a. City Parks
  - b. County Parks
  - c. Private Parks
  - d. City Owned Lots (future parks)
  - e. Others?
3. Review Downtown Improvements
  - a. Parks
  - b. Trails
  - c. Priorities
  - d. Other unidentified wants/needs?
4. Review City-Wide Improvements
  - a. Parks
  - b. Trails
  - c. Priorities
  - d. Other unidentified wants/needs?
5. Review Regional Improvements
  - a. Parks
  - b. Trails
  - c. Priorities
  - d. Other unidentified wants/needs?
6. Review/Discuss Updated Preliminary Costs
  - a. Parks (maintenance & development)
  - b. Trails (maintenance & development)
7. Discuss Funding



**BOLTON  
& MENK**



- a. Mississippi River Trail (Not regionally designated)
  - b. Bend in the River Park (Not regionally designated)
  - c. Funding Sources/Legacy
  - d. Schedule/timing
8. Next Steps
    - a. Delivery of final Master Plan document to the City (August 31, 2017)
  9. Open house to follow Steering Committee Meeting from 6:00-7:30.

**The purpose of the Parks and Trails Plan is to:**

- Raise awareness of current parks, trails and safe routes to school opportunities.
- Work toward building an environment that makes active living an easily accessible option for all residents.
- Educate the community about the benefits of active living.
- Ensure that parks and trails meet the needs and desires of the community.
- Engage community members and community leaders and decision-makers to gather input on current conditions of parks and trails, as well as raise awareness of the needs and possible opportunities.
- Identify efficient routes and improvements to connect destinations within the area.
- Increase the safety of pedestrian and biking facilities within the area.
- Prepare a Comprehensive Parks and Trails Plan with recommended improvements to trails, routes, sidewalks, pedestrian crossings, parks and open spaces, way-finding and an implementation plan (priorities, cost estimates and funding options).

## STEERING COMMITTEE MEETING 8/9/17

4:00-6:00 pm Rice City Hall

Attendees:

Stephanie Roggenbuck, Melinda Fast, Ken Nodo, Kelly Desormey, Greg Bruestle, Ross Hamann, Jerry Sauer, Sam Hageman, Mark Hauck, Chris Byrd, Brian Skroch, Ed Popp, Phil Martin (BMI), Jon Nelsen (BMI)

MEETING NOTES:

1. Bolton & Menk (BMI) began the meeting with a review of the various maps that are being generated for the master plan. The maps and recommendations were discussed in the order below:
  - i) Facilities Location Map revisions
    - Modify park in xx neighborhood to include the parcel to the north of what is shown currently
  - ii) Proposed Downtown Improvements Map revisions
    - Elementary school drop-off lot should be modified to be the parking lot north of Lions Park.
    - Sidewalk improvements around parking lot south of Main Street should be shifted along the east side of Lions Park and school drop-off lot.
    - Main Street/railroad crossing should be identified as improvement #1A
    - A secondary pedestrian overpass crossing should be shown across the railroad tracks at Division St./1<sup>st</sup> St. NE and identified as improvement #1B
    - All maps should be updated so that they can be cross referenced easier (color coding/line styles for city-wide & downtown maps will reflect regional system improvements, downtown map will also reflect city-wide improvements
  - iii) Proposed City-Wide Improvements Map revisions
    - Show a secondary railroad crossing on the north side of town along NW 12<sup>th</sup> Street, and a future trail connection from the west loop to the downtown loop.
    - Trail loops will become improvement #2A, secondary crossing and future trail connection will be improvement #2B
  - iv) Proposed Regional Improvements Map revisions
    - No modification noted to Regional Improvements map
2. Next BMI described the estimated costs of the items listed on the three various improvement maps (Downtown, City-wide, and Regional). The estimated full build-out cost for the parks and trails system would be approximately \$4 million. This does not account for any land acquisition.

3. Funding was then discussed. Bolton & Menk will provide contact info for City to Legacy Funding contact, and will get clarification on Mississippi River Trail's regional designation, as well as Bend in The River's designation as a regional park. This information will be included in the final report.
4. Draft copy of the Master Plan report will be sent to the City of Rice for review August 31, 2017.
5. Open House meeting followed Steering Committee Meeting from 6:00-7:30.
6. Concepts were presented in a presentation style meeting to a group of 10-15 residents, with charrette style discussions following. No changes to concepts were discussed.

Comprehensive Parks and Trails Plan  
 Task Force Meeting #3 – August 9, 2017  
 4-5:30 PM (Rice City Hall)

Name/Business	Address	Phone	Email
Stephane Hogenbuck City of Rice	205 Main St PO Box 179 Rice, MN 56367	320-393-7780	clerk@cityofrice.com
Brian Skrach city of Rice	140 Division St S Rice, MN 56367	320-393-2191	
Sam Hageman Benton Co	8271 115th St NE Foley, MN 56329	320-362-4812	shageman@co.benton.mn.us
Mindy Fast Benton Co	1020 13th Ave N St. Cloud MN 56303	320-282-8533	mfast@co.benton.mn.us
Ken Nels Rice Pk. Bd	911 10th St NE Rice MN 56367	320-393-2096 H. 320-287-0027 C	KNels@rice74p.net
Key Desormey RICE PARK BOARD	380 2ND STREET CT SW RICE, MN 56367	(218) 213-7093	Kdesormey@mpower.com
Chris Byrd Benton Co	PO Box 249 Foley, MN 56329	320-968-5054	cbyrd@co.benton.mn.us



Comprehensive Parks and Trails Plan  
 Task Force Meeting #3 – August 9, 2017  
 4-5:30 PM (Rice City Hall)

Name/Business	Address	Phone	Email
Greg Bruestle Langola Township Benton Co. Park Board	11825 16th Ave NW Rice, MN 56367	320-393-2690	bruestle@cloudnet.com
Jerry Sauer Rice Park Board	P.O. Box 151 Rice	393-4375	jsauer@setup.net
Ross Hamann Police	205 E Main St, Rice	320-250-4816	rhamann@cityofrice.com
Mark Hawck ISD 47	1520 50 <sup>th</sup> Ave NE Sank Rapids	320-420-3549	mark.m.hawck@gmail.com
Ed Popp Brook Co.	15074 5 <sup>th</sup> Ave NE Rice, MN	320-792-1832	edpopp53@xalco.com



**BOLTON  
& MENK**



Comprehensive Parks and Trails Plan  
 Public Open House #2 – August 9, 2017  
 6-8 PM (Rice City Hall)

Name/Business	Address	Phone	Email
Courtney Niño	320 1st Ave Rice NW PO Box 14	320 493 4587	Courtney Niño @hotmail.com
Chris Schuel	404 7th Ave SW Rice, MN 56367	320 250-7440	Chris-Schuel@hotmail.com
Natasha Barber	22 11th Ave SW Unit 122 Rice MN 56367	320. 227. 3618	Natasha@ Sawkerand.com
Vicki Nado	911 10th St. NE Rice MN 56367	320- 393-2096	
Denise Nolden	130 1st St SW Rice, MN 56367	393-3390	
Tate Nolden	130 1st St SW Rice, MN 56367	393-3390	
Eric + Laura Loberg	618 2nd Ave SW Rice, MN 56367	320-237-0519 320-267-0827	lberg19@hotmail.com



Comprehensive Parks and Trails Plan  
 Public Open House #2 – August 9, 2017  
 6-8 PM (Rice City Hall)

Name/Business	Address	Phone	Email
Bryan Anderson	709 8TH AVE SW	320 380 3695	BryanLAnderson77 @Live.com
Aaron Gindale	612 11th Ave SW	320-774-8063	aaron.gindale@jetup.net

